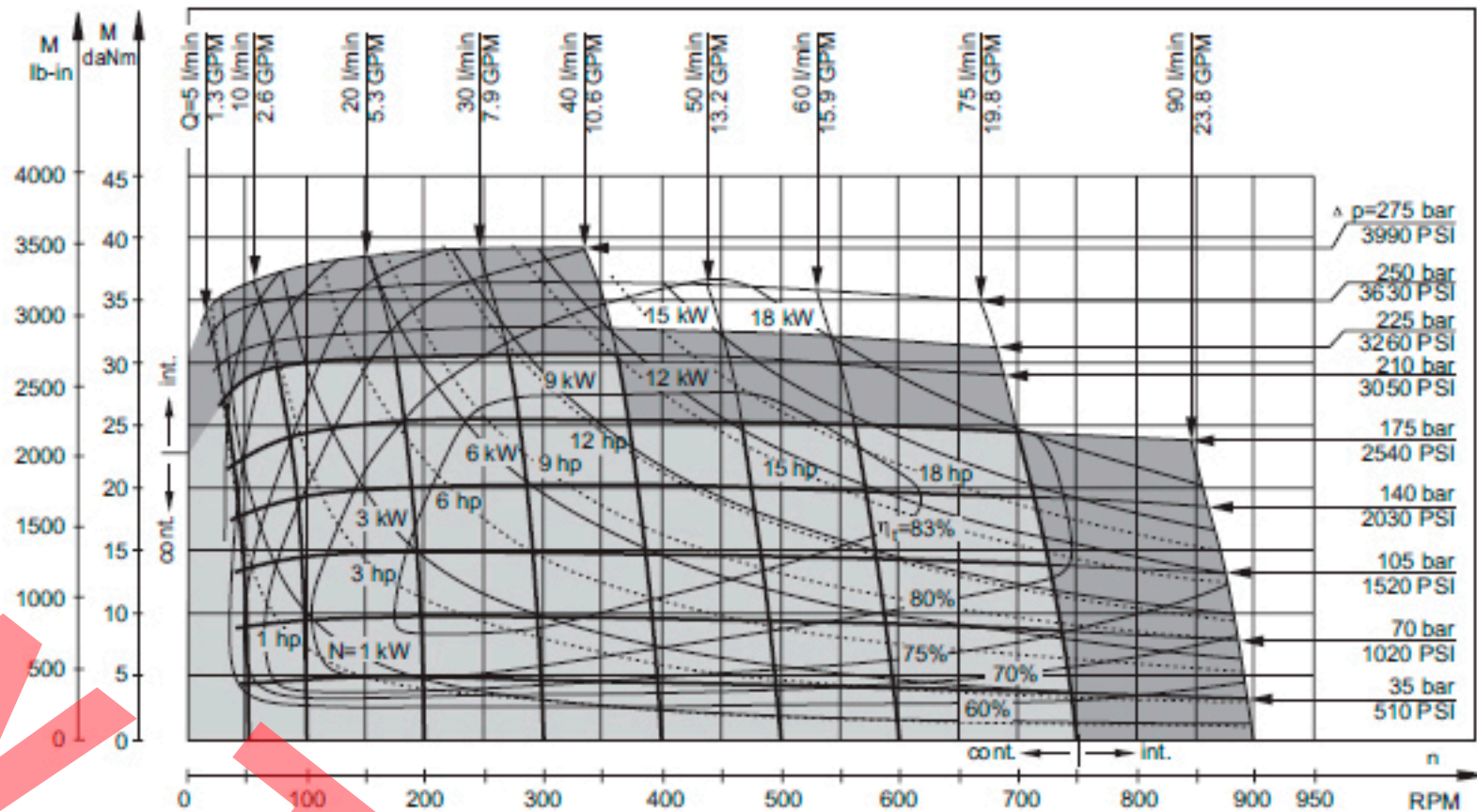


SPECIFICATION DATA

Type		MS 100
Displacement, cm ³ /rev [in ³ /rev]		100 [6.1]
Max. Speed, [RPM]	cont.	750
	Int.*	900
Max. Torque daNm [lb-in]	cont.	30,5 [2700]
	Int.*	39 [3450]
Max. Output kW [HP]	cont.	18 [24.1]
	Int.*	22,8 [30.2]
Max. Pressure Drop bar [PSI]	cont.	210 [3050]
	Int.*	275 [3990]
	peak**	295 [4280]
Max. Oil Flow lpm [GPM]	cont.	75 [20]
	Int.*	90 [24]
Max. Inlet Pressure bar [PSI]	cont.	230 [3340]
	Int.*	295 [4280]
	peak**	300 [4350]
Max. Return Pressure with Drain Line bar [PSI]	cont.	140 [2030]
	Int.*	175 [2540]
	peak**	210 [3050]
Max. Starting Pressure with Unloaded Shaft, bar [PSI]		10 [145]
Min. Starting Torque daNm [lb-in]	at max. press. drop cont.	23 [2040]
	at max. press. drop Int.*	30 [2660]
Min. Speed***, [RPM]		10
Weight, kg [lb]	MS(F)	10,1 [22.2]
	MSW	10,6 [23.3]
For Rear Ports + 0,40 [.88]	MSS	8,1 [17.8]
	MSV	6 [13.2]
	MSQ	10,5 [23.2]
	MSB	17,1 [37.7]

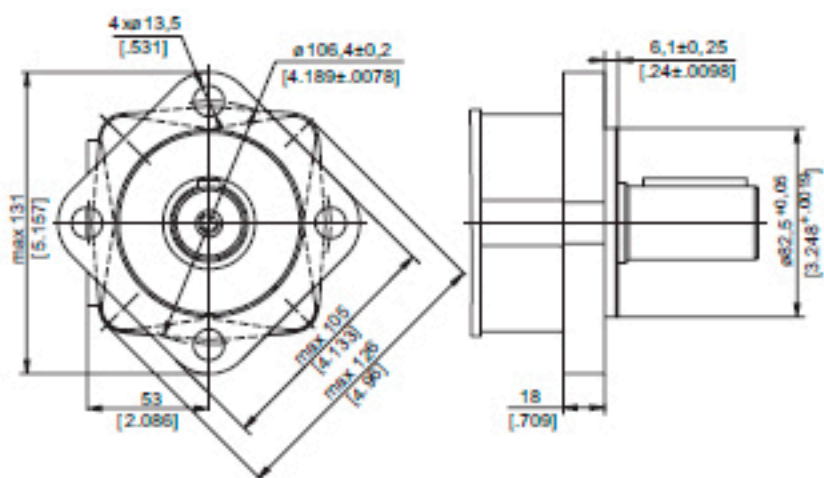
MS 100



Type	L, mm[in.]	L ₂ , mm[in.]	*L ₃ , mm[in.]
MS(F,A) 100	171 [6.73]	128 [5.04]	177 [6.97]

DIMENSIONS AND MOUNTING DATA

SAE A-4 Mount (4 Holes)



C - ø32 straight, Parallel key A10x8x45 DIN 6885
Max. Torque 77 daNm [6815 lb-in]

