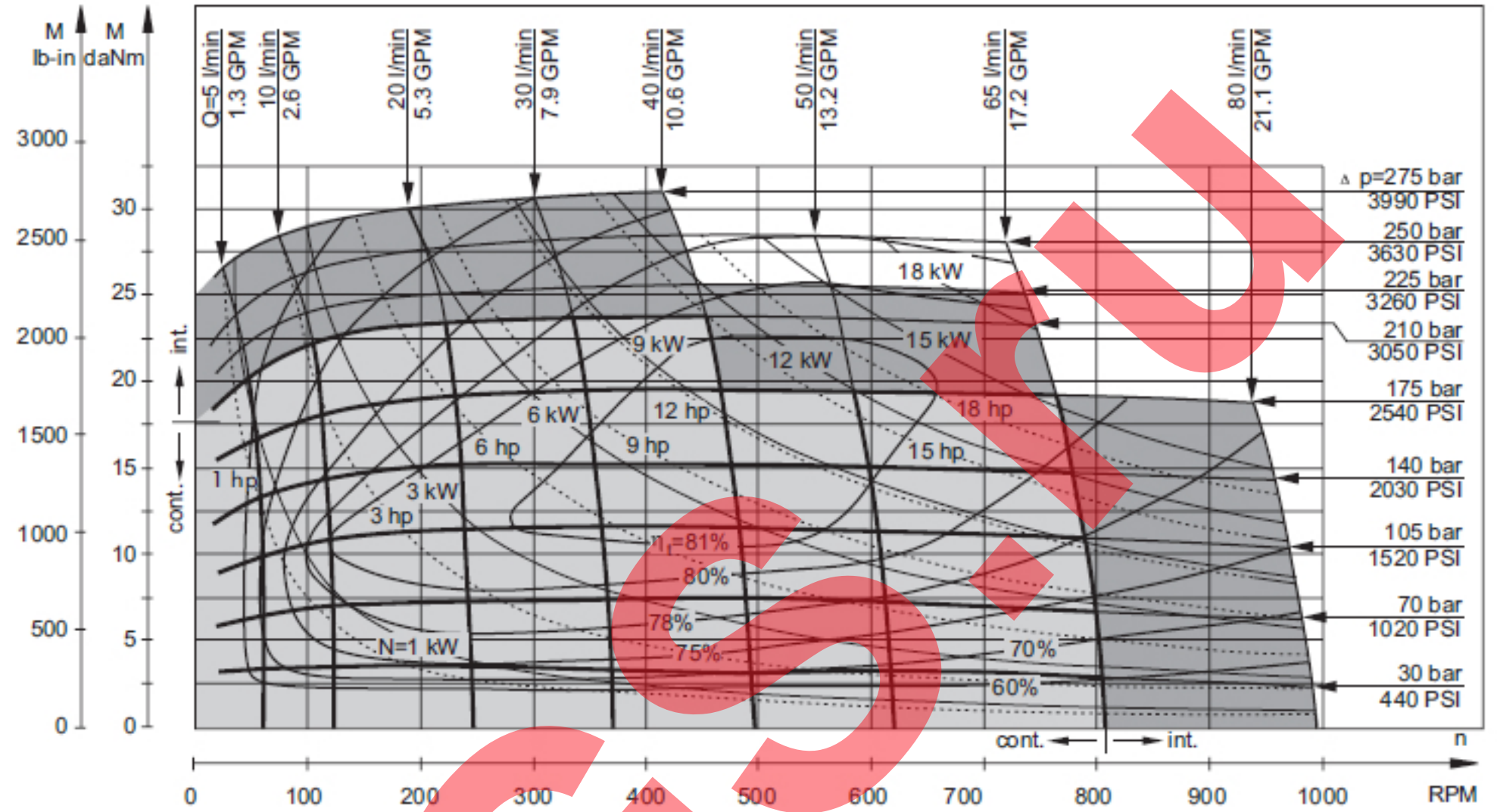


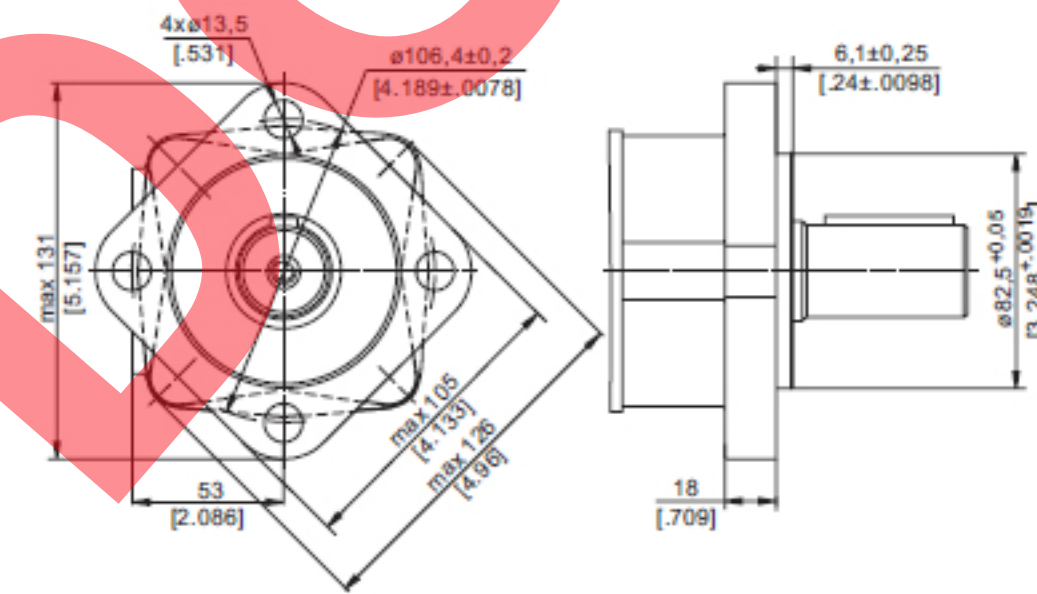
SPECIFICATION DATA

MS 80

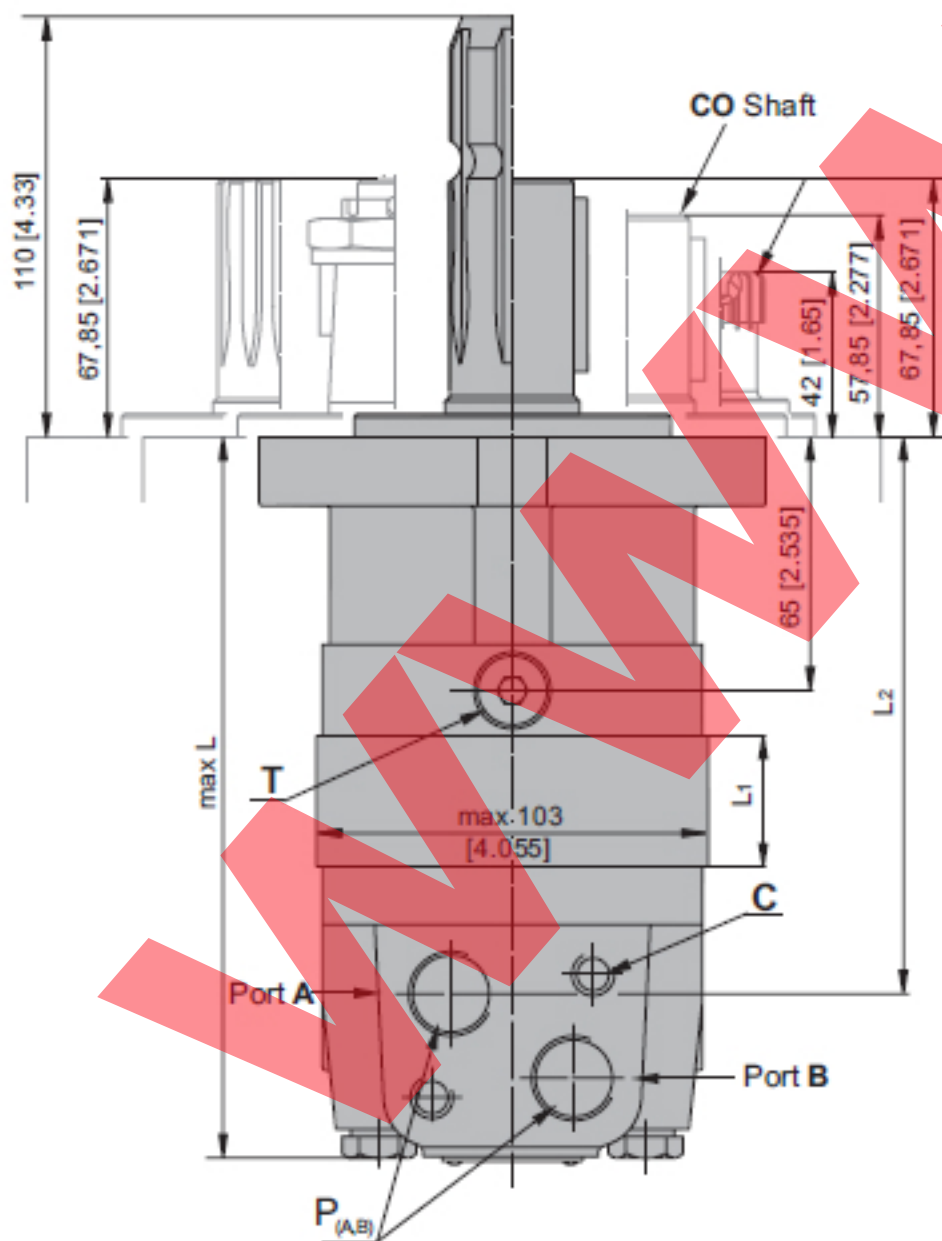
Type		MS 80
Displacement, cm ³ /rev [in ³ /rev]		80,5 [4.91]
Max. Speed,	cont.	810
[RPM]	Int.*	1000
Max. Torque	cont.	24 [2120]
daNm [lb-in]	Int.*	31 [2740]
Max. Output	cont.	15,5 [20.8]
kW [HP]	int.*	19,5 [26.2]
Max. Pressure Drop	cont.	210 [3050]
bar [PSI]	Int.*	275 [3990]
	peak**	295 [4280]
Max. Oil Flow	cont.	65 [17]
lpm [GPM]	Int.*	80 [21]
Max. Inlet Pressure	cont.	230 [3340]
bar [PSI]	Int.*	295 [4280]
	peak**	300 [4350]
Max. Return Pressure	cont.	140 [2030]
with Drain Line	Int.*	175 [2540]
bar [PSI]	peak**	210 [3050]
Max. Starting Pressure with Unloaded Shaft, bar [PSI]		12 [175]
Min. Starting Torque	at max. press. drop cont.	18 [1590]
daNm [lb-in]	at max. press. drop Int.*	23,5 [2080]
Min. Speed**, [RPM]		10
Weight, kg [lb]	MS(F)	9,9 [21.8]
	MSW	10,4 [22.9]
	MSS	7,9 [17.4]
	MSV	5,8 [12.8]
	MSQ	10,3 [22.7]
	MSB	16,9 [37.3]
For Rear Ports		+ 0,40 [.88]



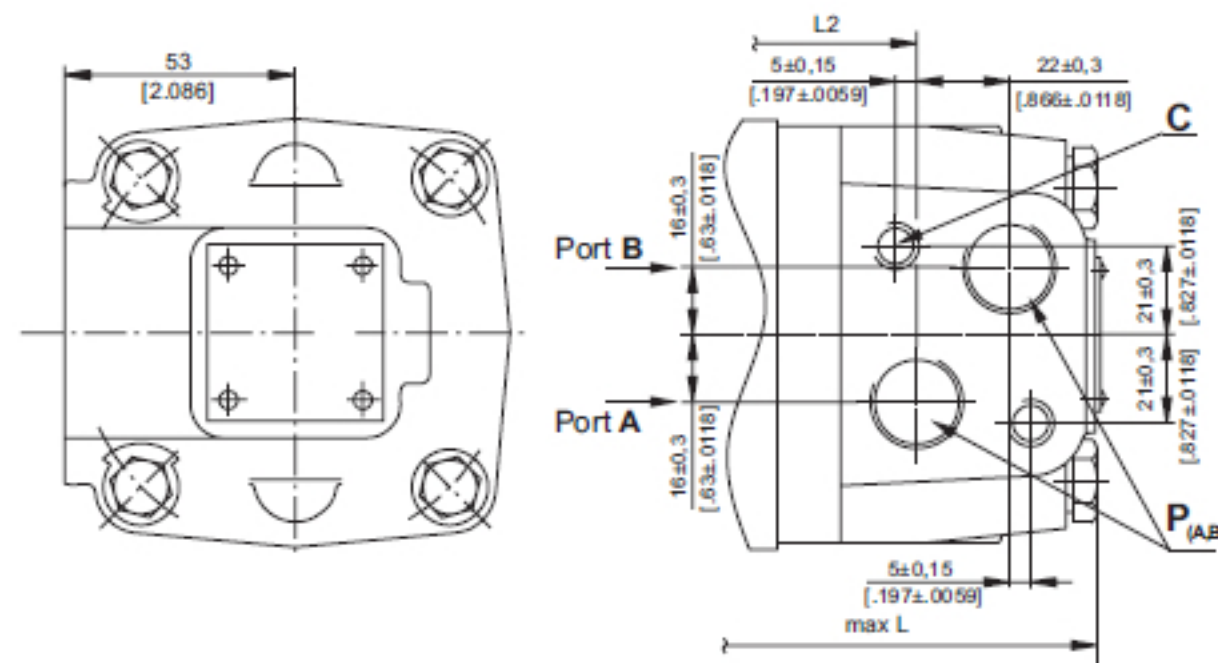
SAE A-4 Mount (4 Holes)



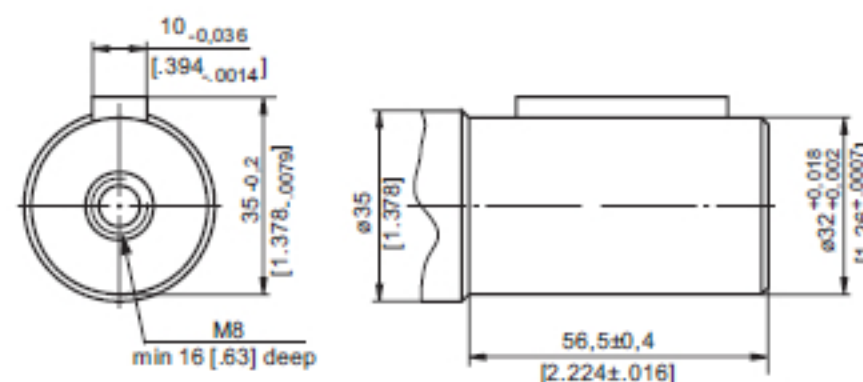
Type	L, mm[in.]	L ₂ , mm[in.]	*L _E , mm[in.]
MS(F, A) 80	168 [6.61]	124 [4.88]	173 [6.81]



Side Ports



C - ø32 straight, Parallel key A10x8x45 DIN 6885
Max. Torque 77 daNm [6815 lb-in]



C: 2xM10-12 mm [.47 in] depth
P_(A,B): 2xG1/2 or 2xM22x1,5-15 mm [.59 in] depth
T: G ¼ or M14x1,5- 12 mm [.47 in] depth (plugged)