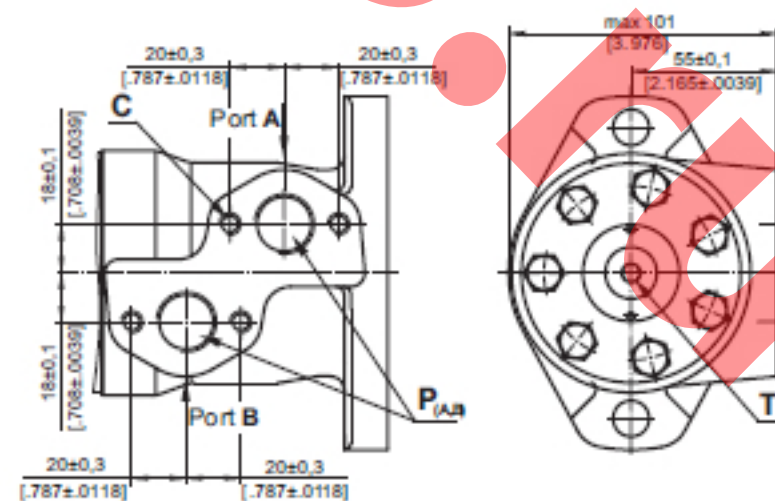
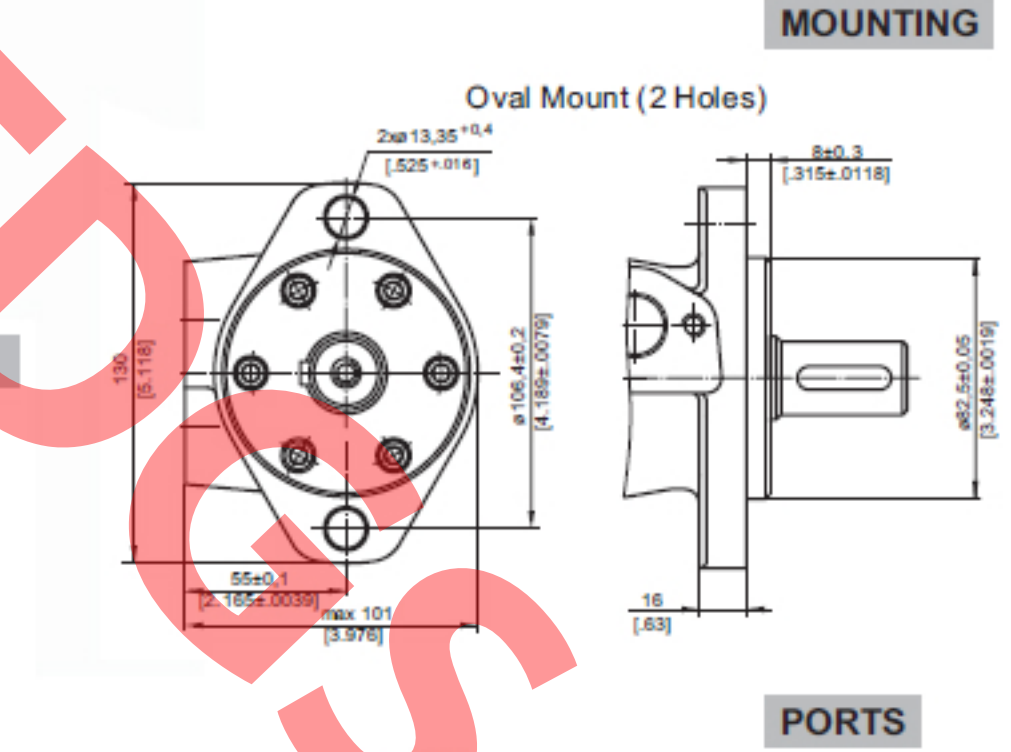
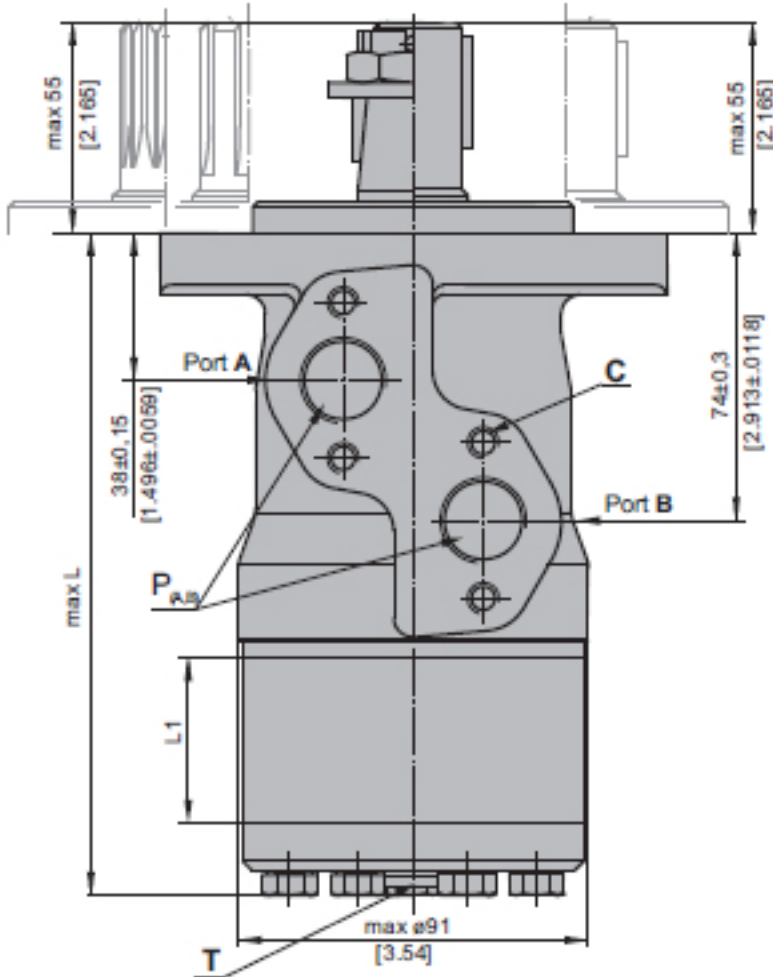


**SPECIFICATION DATA**

Type		40
Displacement, cm <sup>3</sup> /rev [in <sup>3</sup> /rev]		40 [2.44]
Max. Speed, [RPM]	Cont.	1500
	Int.*	1750
Max. Torque daNm [lb-in]	Cont.	8,2 [550]
	Int.*	8,2 [730]
	Peak**	10,7 [950]
Max. Output kW [HP]	Cont.	8,4 [11.5]
	Int.*	11,6 [15.5]
Max. Pressure Drop bar [PSI]	Cont.	120 [1750]
	Int.*	155 [2250]
	Peak**	225 [3260]
Max. Oil Flow lpm [GPM]	Cont.	60 [15.9]
	Int.*	70 [18.5]
Max. Inlet Pressure bar [PSI]	Cont.	175 [2540]
	Int.*	200 [2900]
	Peak**	225 [3260]
Max. Return Pressure with Drain Line bar [PSI]	Cont.	175 [2540]
	Int.*	200 [2900]
	Peak**	225 [3260]
Max. Starting Pressure with Unloaded Shaft, bar [PSI]		10 [145]
Min. Starting Torque daNm [lb-in]	At max.press. drop Cont.	5,4 [460]
	At max.press. drop Int.*	6,8 [600]
Min. Speed d***, [RPM]		10
Weight, kg [lb] For rear ports		5,7 [12.6]
+0,450 [.992]		

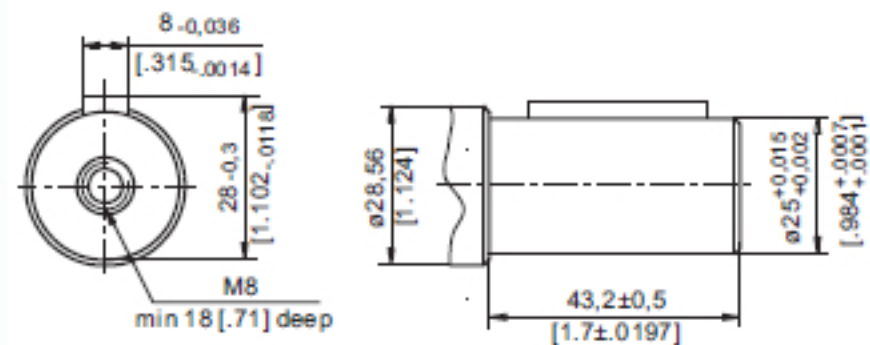
Type	L, mm [in]
40	136,5 [5.37]

**DIMENSIONS AND MOUNTING DATA**

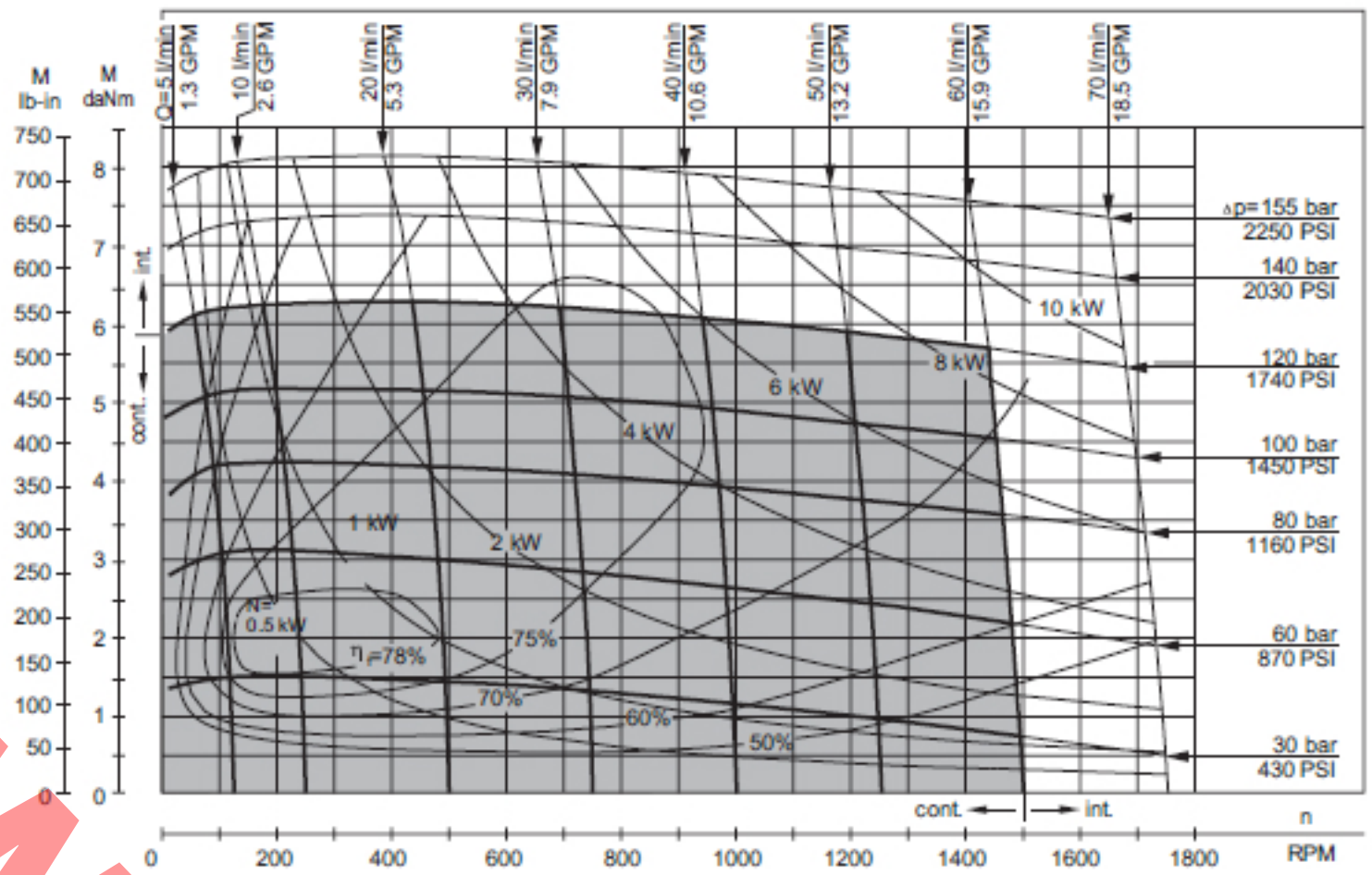


**SHAFT EXTENSIONS**

ø25 straight, Parallel key A8x7x32 DIN 6885  
Max. Torque 34 daNm [3010 lb-in]



**FUNCTION DIAGRAMS**



**MOUNTING**

**PORTS**

**SHAFT EXTENSIONS**