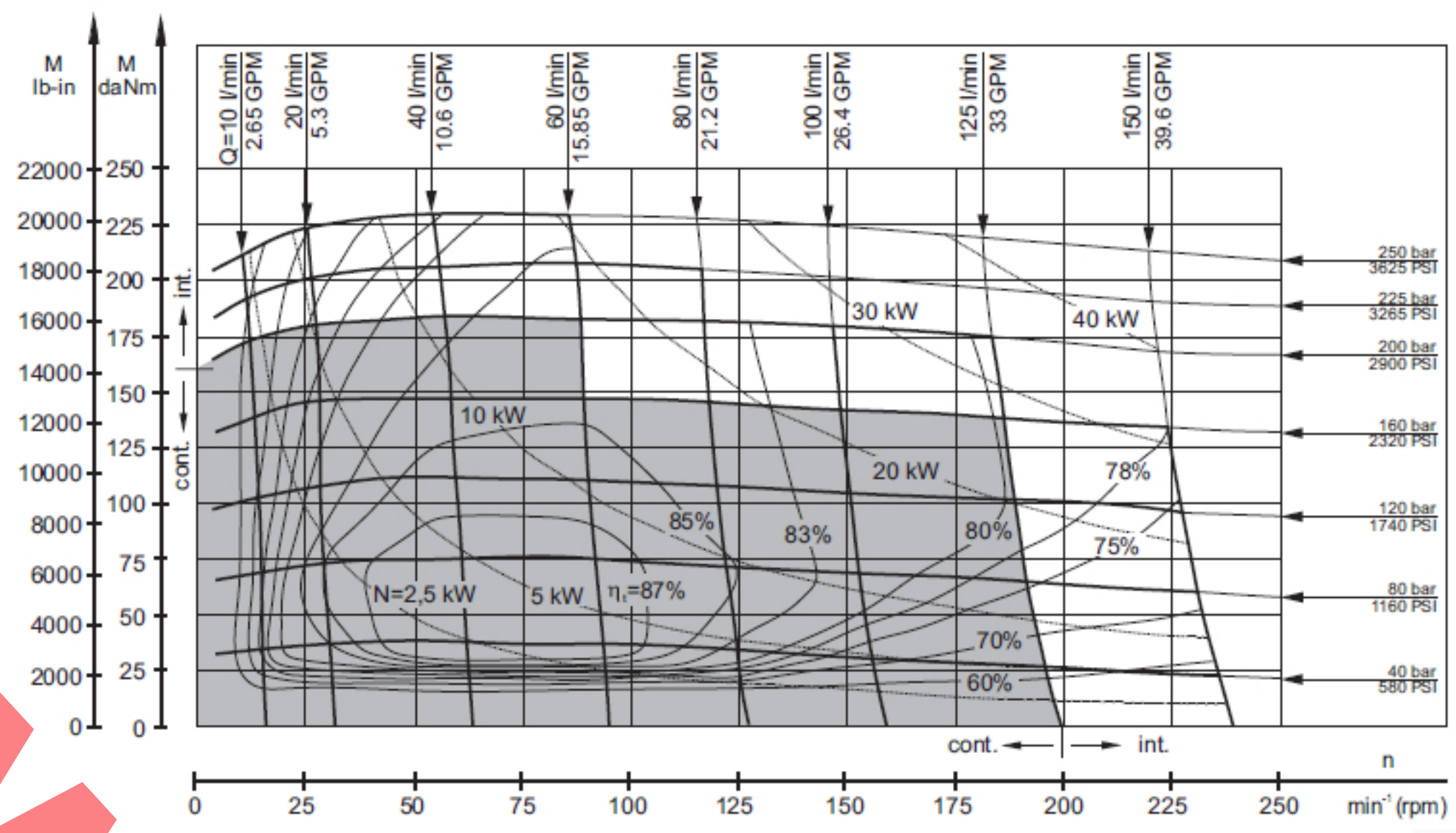


SPECIFICATION DATA

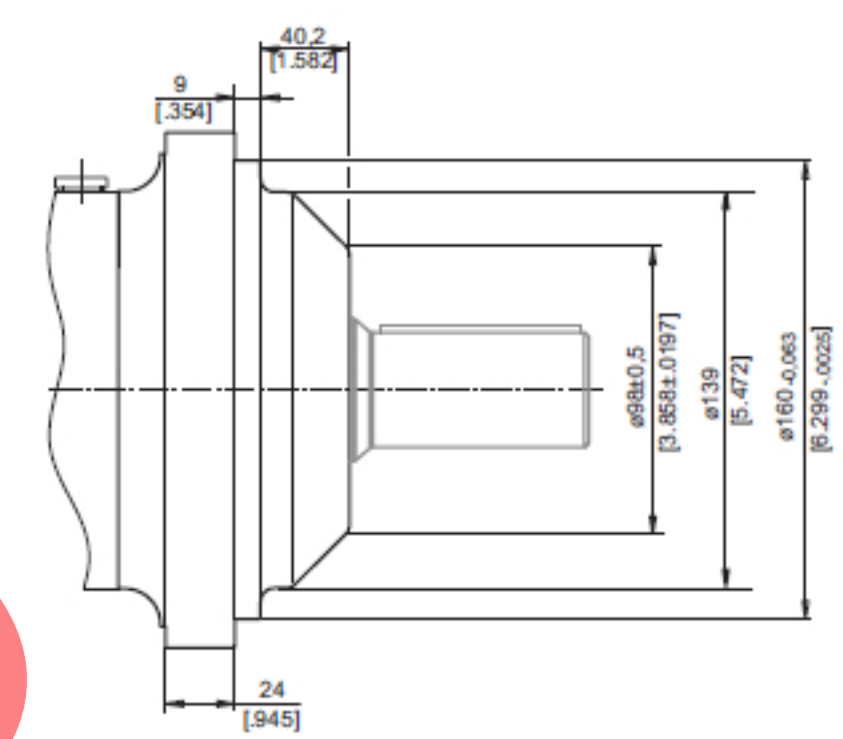
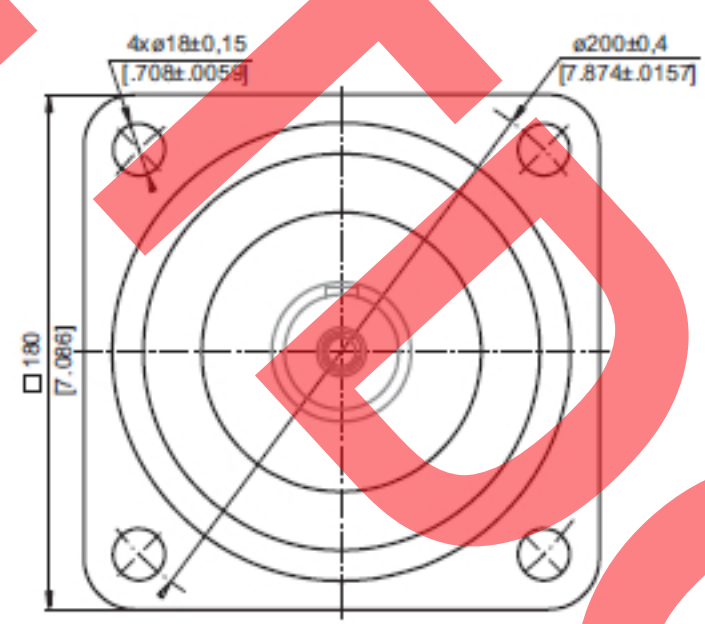
MTM 630

Type		MTM 630
Displacement, cm ³ /rev [in ³ /rev]		631,2 [38.52]
Max. Speed, [RPM]	Cont. 190 Int.* 230	
Max. Torque daNm [lb-in]	Cont. 183[16200] Int.* 229[20270] Peak** 274[24250]	
Max. Output kW [HP]	Cont. 28 [37,5] Int.* 42 [56]	
Max. Pressure Drop bar [PSI]	Cont. 200[2900] Int.* 250[3625] Peak** 300[4350]	
Max. Oil Flow lpm [GPM]	Cont. 125[33] Int.* 150[40]	
Max. Inlet Pressure bar [PSI]	Cont. 270[3920] Int.* 370[5370] Peak** 420[6100]	
Max. Return Pressure without Drain Line or Max. Pressure in Drain Line, bar [PSI]	Cont. 0-100 RPM	75 [1100]
	Cont. 100-300 RPM	40 [580]
	Cont. >300 RPM	-
Max. Return Pressure with Drain Line bar [PSI]	Cont. 140 [2000] Int.* 175 [2500] Peak** 210 [3000]	
Max. Starting Pressure with Unloaded Shaft, bar [PSI]		6 [90]
Min. Starting Torque daNm [lb-in]		145[12830]
Min. Speed***, [RPM]		5
Weight, kg [lb]	MTM	29,7 [65.5]



MOUNTING

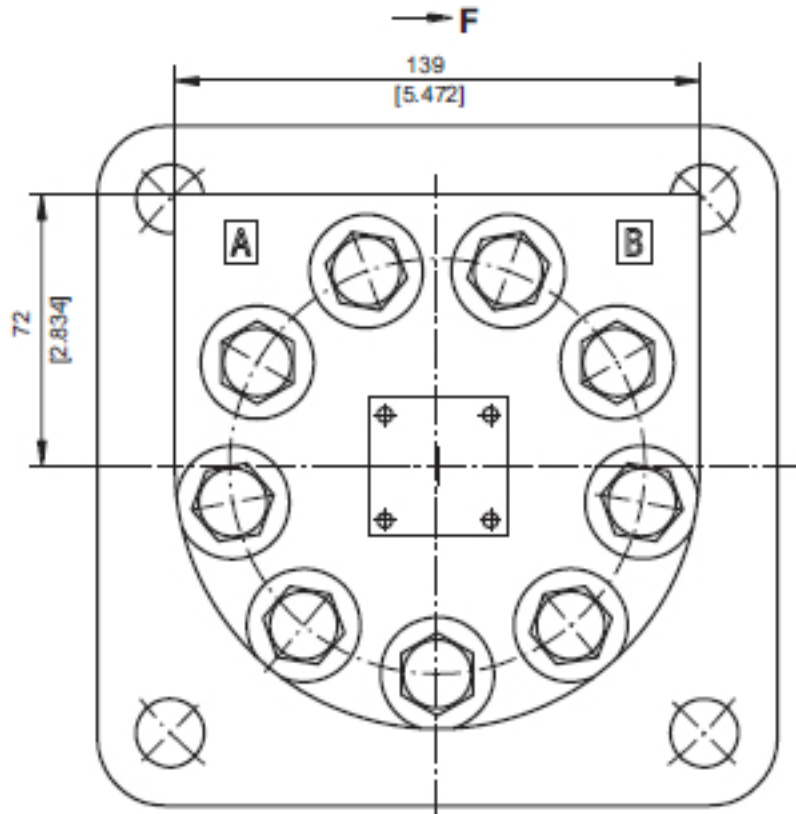
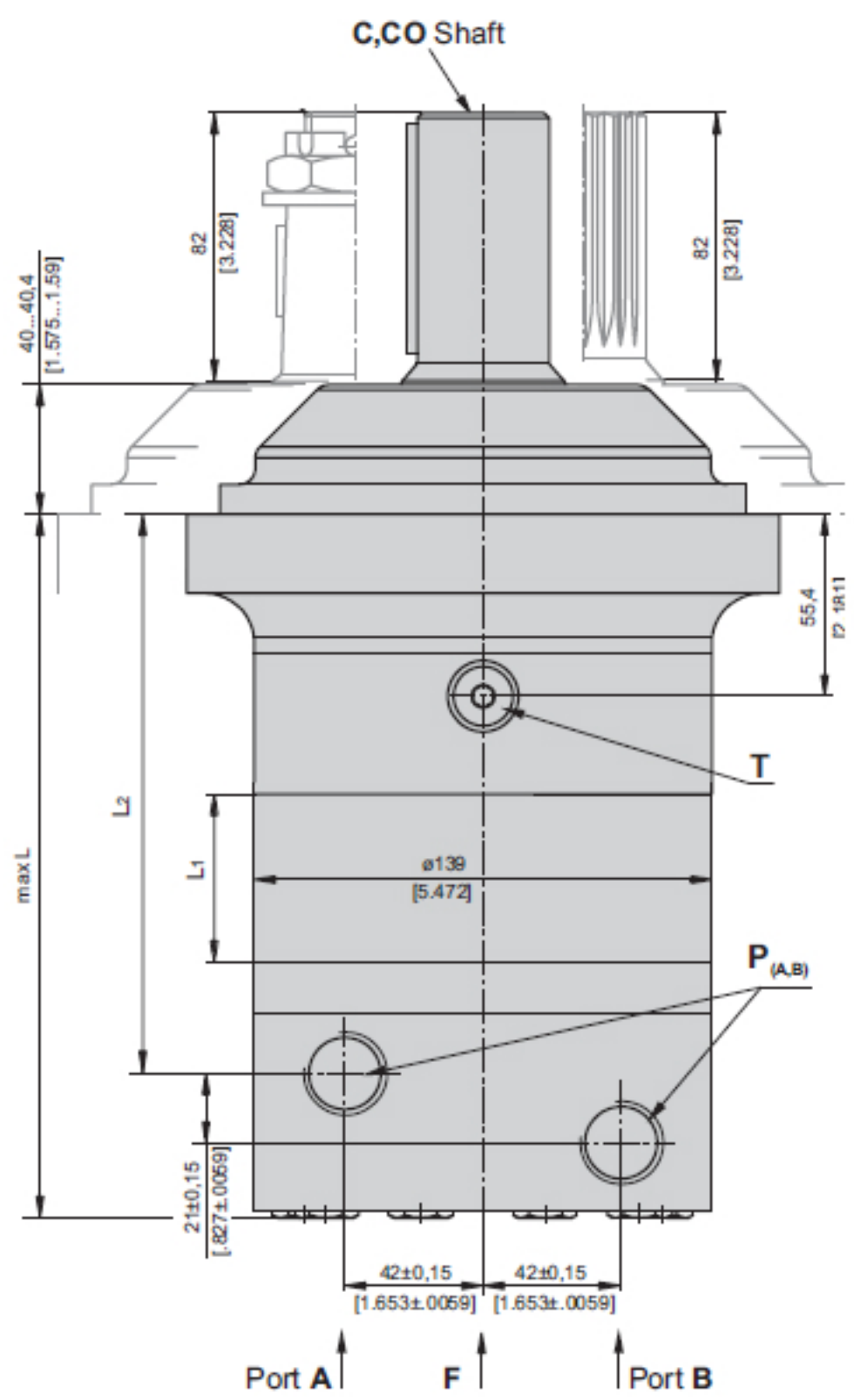
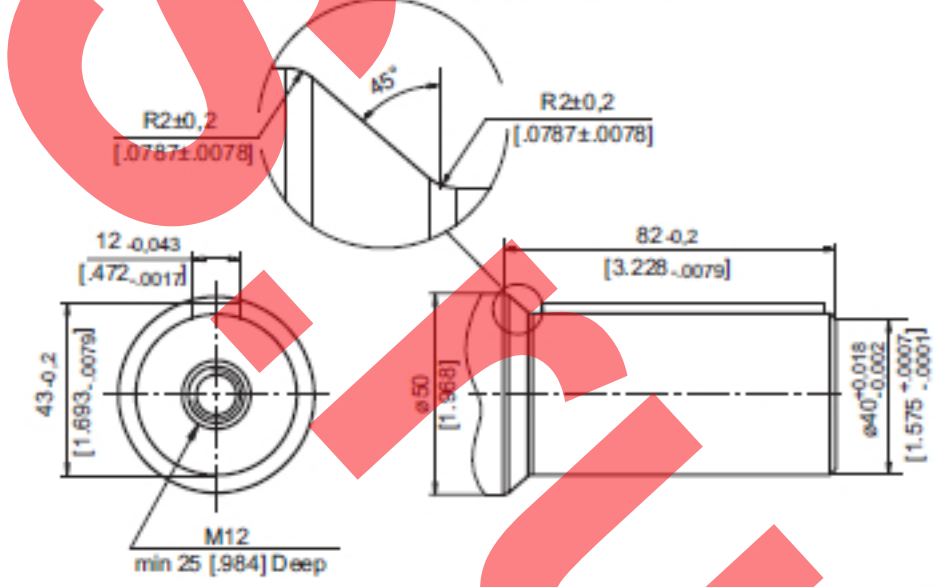
4-Bolt flange
spigot diameter $\phi 160$ mm [6.3 in] - BC $\phi 200$ [7.874 in] mm



SHAFT EXTENSIONS

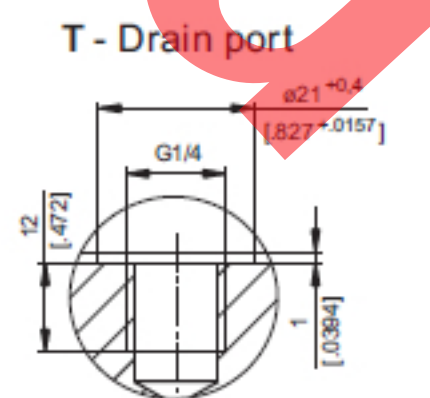
C - $\phi 40$ straight, Parallel key A12x8x70 DIN 6885
Max. Torque 132,8 daNm [11755 lb-in]

Type	L, mm [in]	L ₂ , mm [in]
MTM 630	224 [8.82]	178,3 [7.02]



Standard Rotation
Viewed from Shaft End
Port A Pressurized - CW
Port B Pressurized - CCW

Reverse Rotation
Viewed from Shaft End
Port A Pressurized - CCW
Port B Pressurized - CW



Warning: Drain line should always be used.

P_(A,B): 2xG3/4 - 17 mm [.669 in] depth
T : G1/4 - 12 mm [.472 in] depth (plugged)