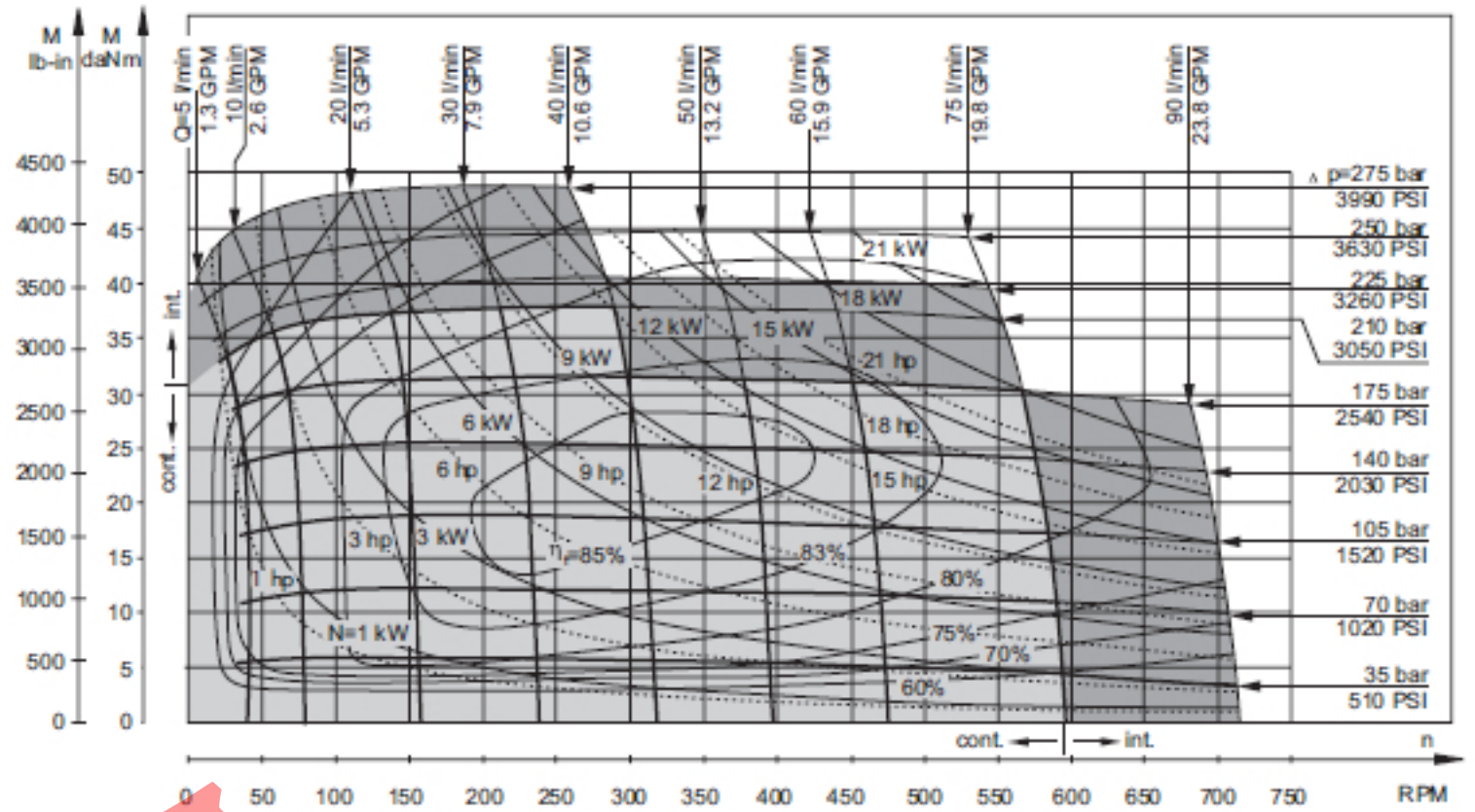
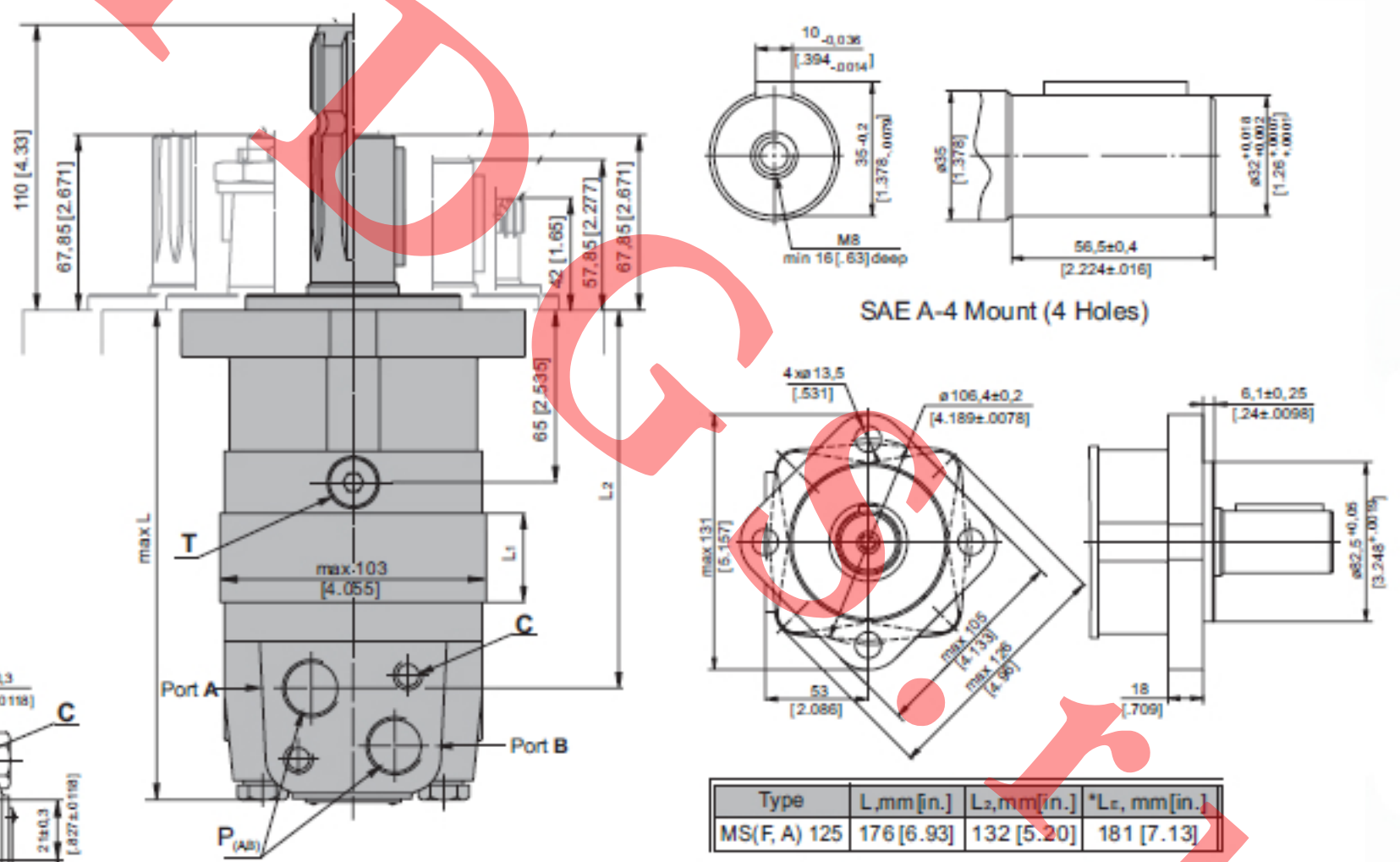


SPECIFICATION DATA

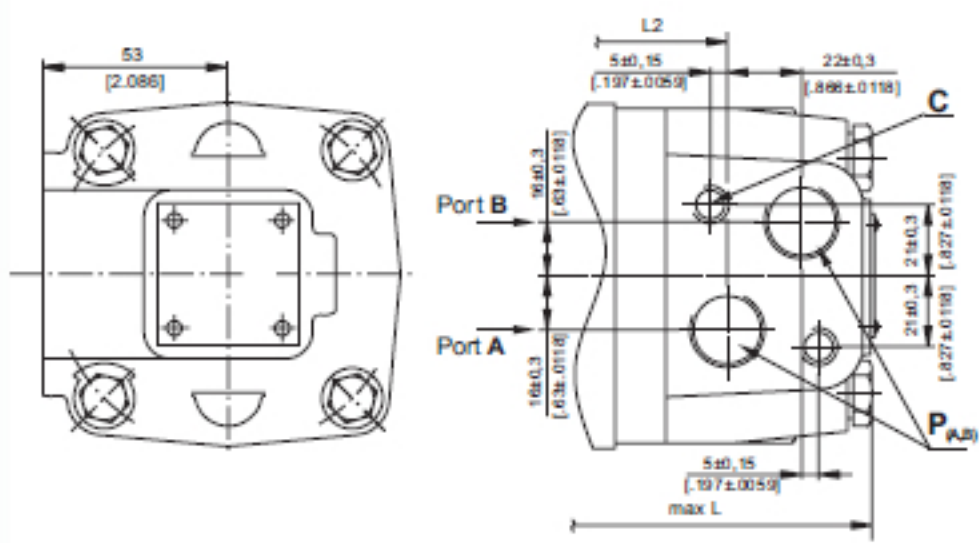
Type		MS 125
Displacement, cm ³ /rev [in ³ /rev]		125,7 [7.67]
Max. Speed, [RPM]	cont.	600
	Int.*	720
Max. Torque daNm [lb-in]	cont.	37,5 [3320]
Max. Output kW [HP]	cont.	18 [24.1]
Max. Pressure Drop bar [PSI]	cont.	210 [3050]
	Int.*	275 [3990]
	peak**	295 [4280]
Max. Oil Flow lpm [GPM]	cont.	75 [20]
	Int.*	90 [24]
Max. Inlet Pressure bar [PSI]	cont.	230 [3340]
	Int.*	295 [4280]
	peak**	300 [4350]
Max. Return Pressure with Drain Line bar [PSI]	cont.	140 [2030]
	Int.*	175 [2540]
	peak**	210 [3050]
Max. Starting Pressure with Unloaded Shaft, bar [PSI]		10 [145]
Min. Starting Torque daNm [lb-in]	at max. press. drop cont.	29 [2570]
	at max. press. drop Int.*	38 [3360]
Min. Speed***, [RPM]		8
Weight, kg [lb]	MS(F)	10,4 [22.9]
	MSW	10,9 [24]
	MSS	8,4 [18.5]
	MSV	6,3 [13.9]
	MSQ	10,8 [23.8]
	MSB	17,4 [38.3]
For Rear Ports + 0,40 [.88]		



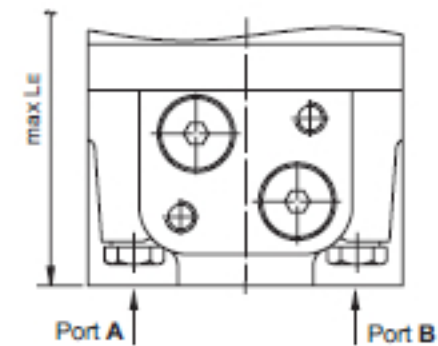
ø32 straight, Parallel key A10x8x45 DIN 6885
Max. Torque 77 daNm [6815 lb-in]



Side Ports



E Rear ports



C: 2xM10-12 mm [.47 in] depth
P_(AB): 2xG1/2 or 2xM22x1,5-15 mm [.59 in] depth
T: G ¼ or M14x1,5- 12 mm [.47 in] depth (plugged)

Standard Rotation
Viewed from Shaft End
Port A Pressurized - CW
Port B Pressurized - CCW

Reverse Rotation
Viewed from Shaft End
Port A Pressurized - CCW
Port B Pressurized - CW

mm [in]