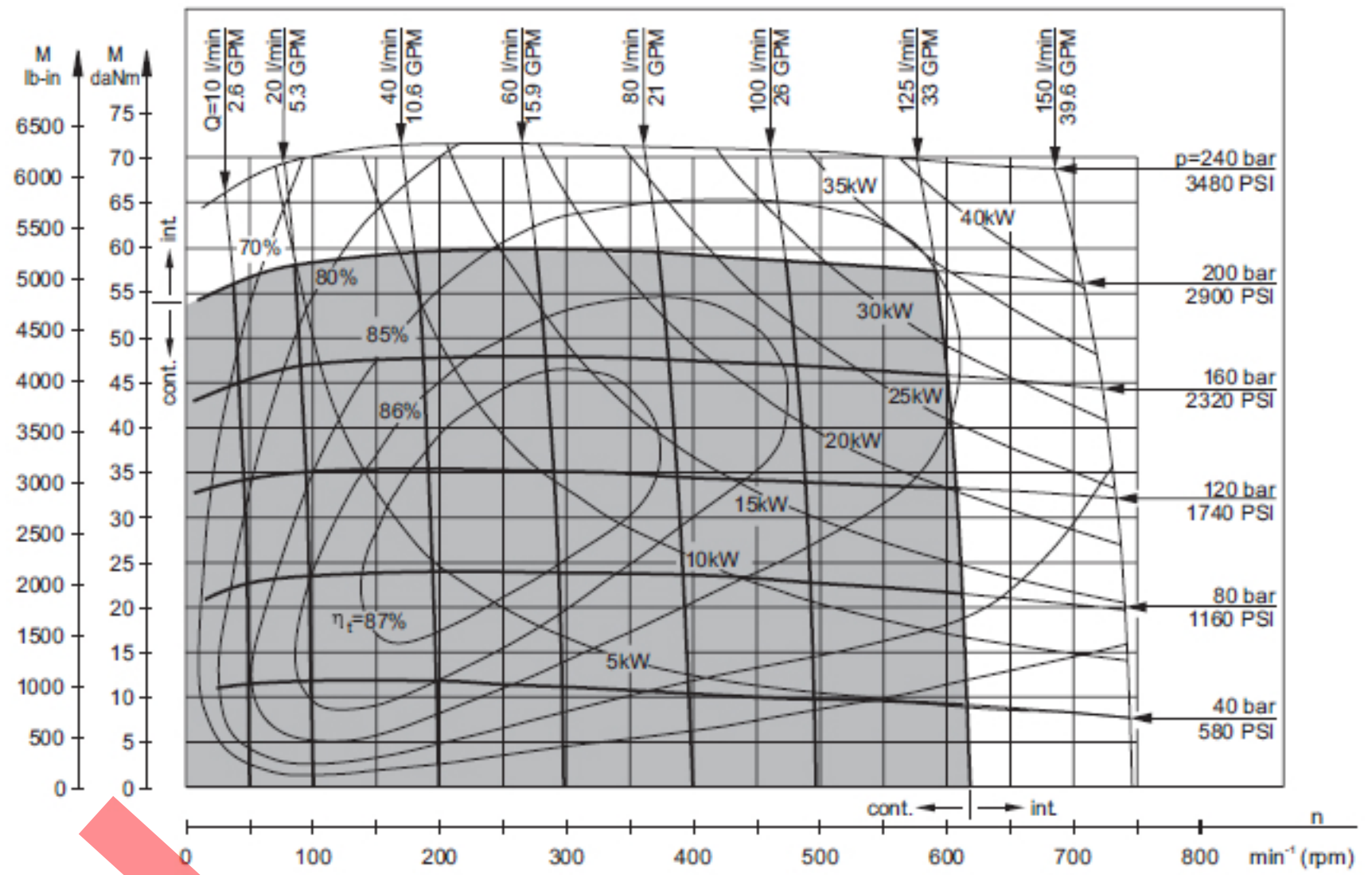


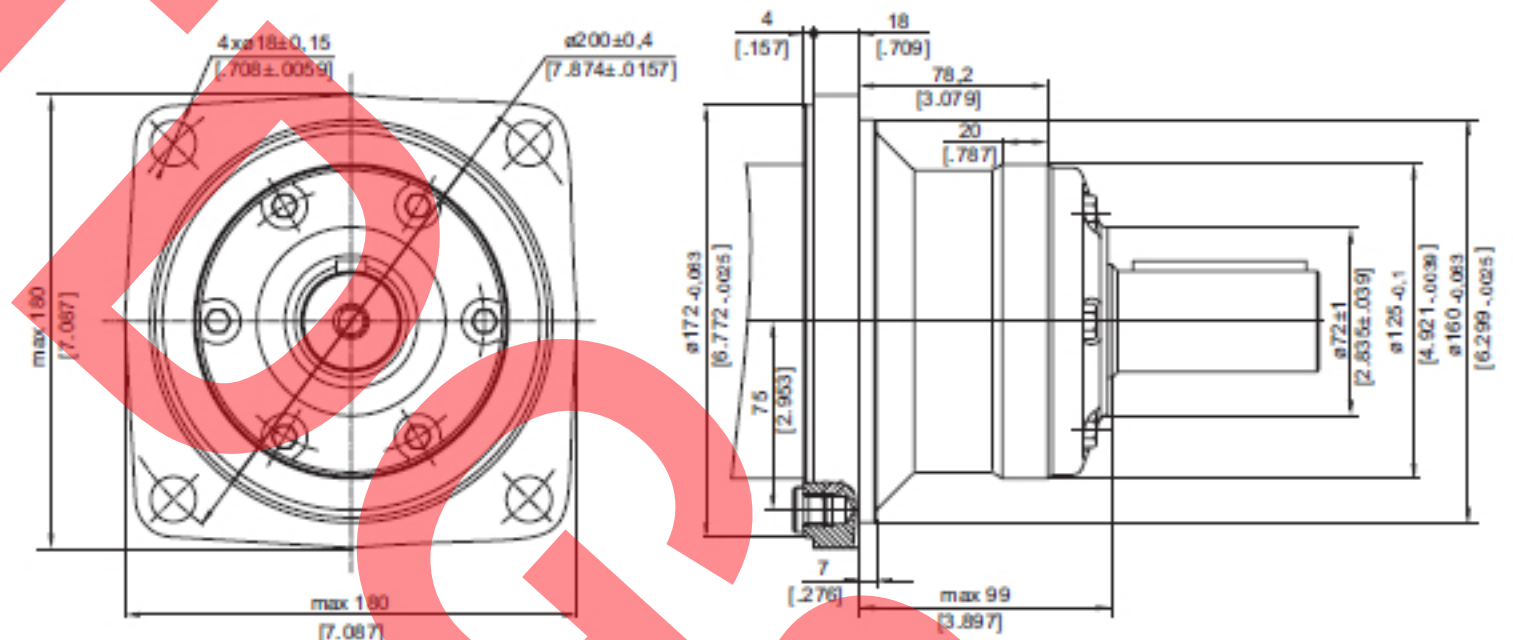
SPECIFICATION DATA

Type		MT 200
Displacement, cm ³ /rev [in ³ /rev]		201,4 [12.29]
Max. Speed, [RPM]	Cont.	620
	Int.*	752
Max. Torque daNm [lb-in]	Cont.	59 [5220]
	Int.*	71 [6285]
	Peak**	82 [7260]
Max. Output kW [HP]	Cont.	33,5 [45]
	Int.*	40 [54]
Max. Pressure Drop bar [PSI]	Cont.	200 [2900]
	Int.*	240 [3480]
	Peak**	280 [4050]
Max. Oil Flow lpm [GPM]	Cont.	125 [33]
	Int.*	150 [39,6]
Max. Inlet Pressure bar [PSI]	Cont.	210 [3050]
	Int.*	250 [3600]
	Peak**	300 [4350]
Max. Return Pressure with Drain Line bar [PSI]	Cont.	140 [2030]
	Int.*	175 [2540]
	Peak**	210 [3050]
Max. Starting Pressure with Unloaded Shaft, bar [PSI]		10 [150]
Min. Starting Torque daNm [lb-in]	At max. press. drop Cont.	43 [3800]
	At max. press. drop Int.*	52 [4600]
Min. Speed**, [RPM]		9
Weight, kg [lb]	MT	21,5 [47.4]
For Rear Ports	MTW	22,5 [49.6]
	MTS	15,5 [34.2]
	MTV	11,5 [25.4]

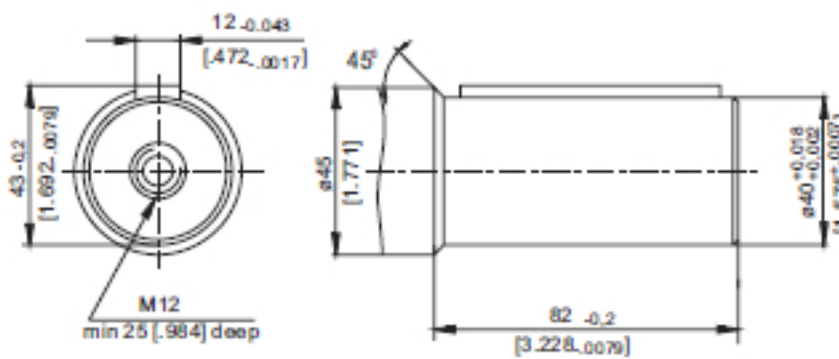
MT 200



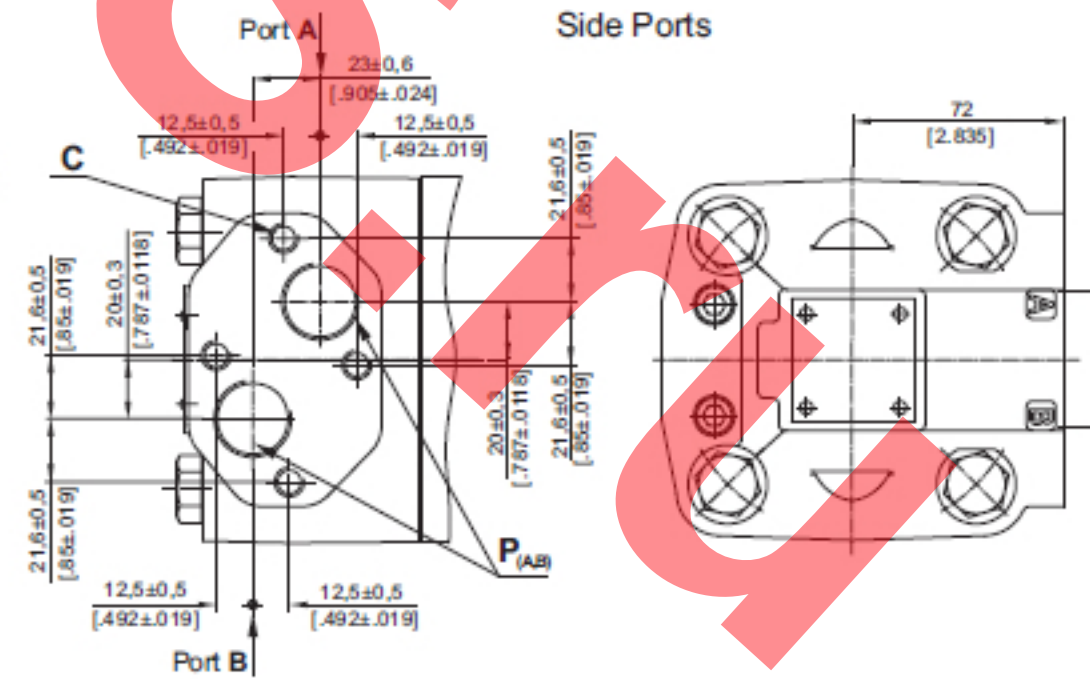
W Wheel Mount



**C -ø40 straight, Parallel key A12x8x70 DIN 6885
Max. Torque 132,8 daNm [11755 lb-in]**



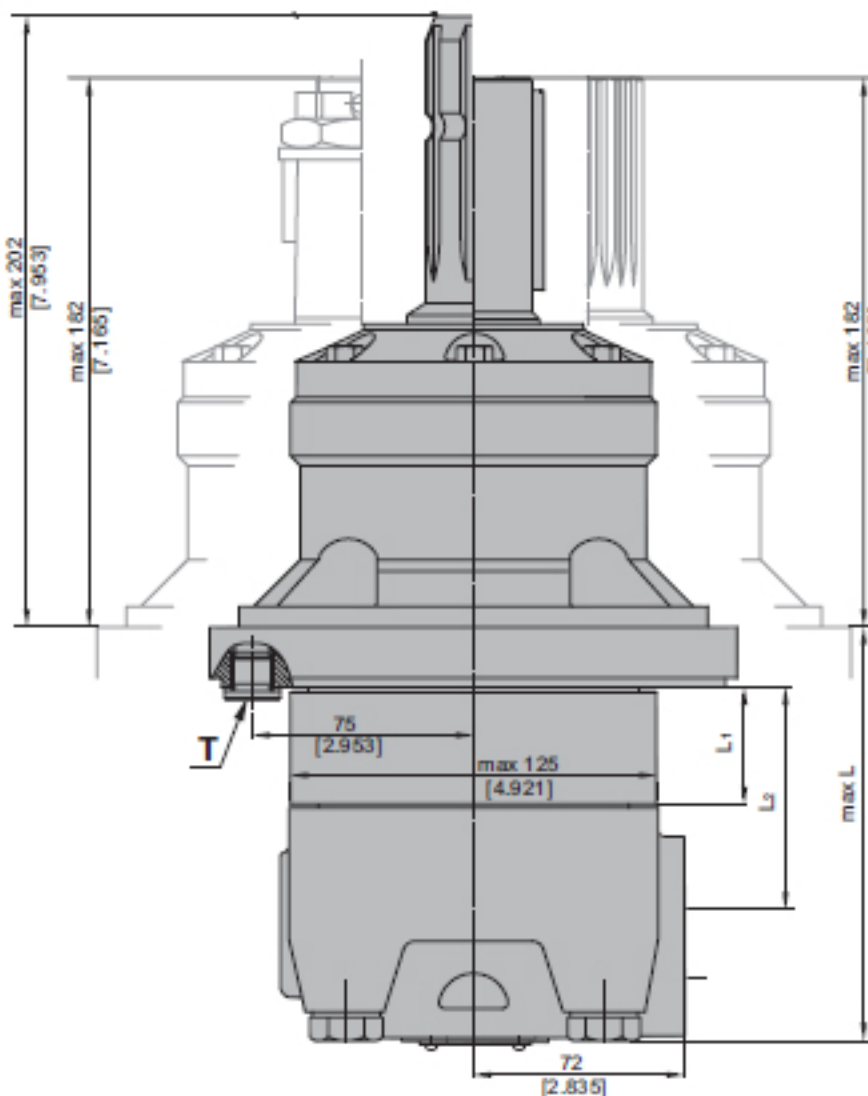
PORTS



Standard Rotation
Viewed from Shaft End
Port A Pressurized - CW
Port B Pressurized - CCW

Reverse Rotation
Viewed from Shaft End
Port A Pressurized - CCW
Port B Pressurized - CW

C: 4xM10-10 mm [.39 in] depth
P_(A,B): 2xG3/4 or 2xM27x2-17 mm [.67 in] depth
T: G 1/4 or M14x1,5 - 12 mm [.47 in] depth (plugged)



Type	L, mm [in]	L2, mm [in]	**LE, mm [in]	*L1, mm [in]
MTW 200	128 [5.04]	78 [3.07]	138 [5.43]	21,5 [8.5]