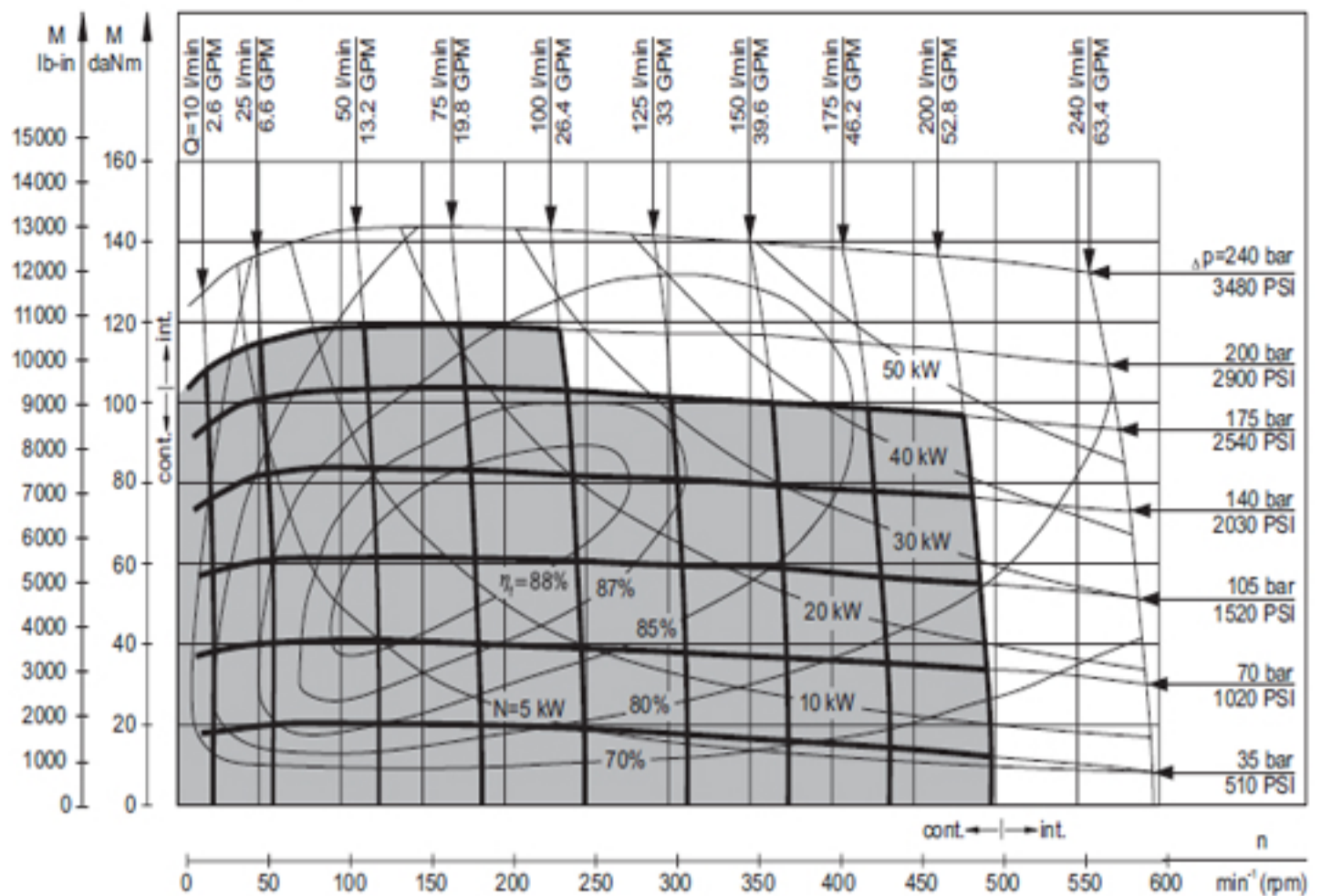


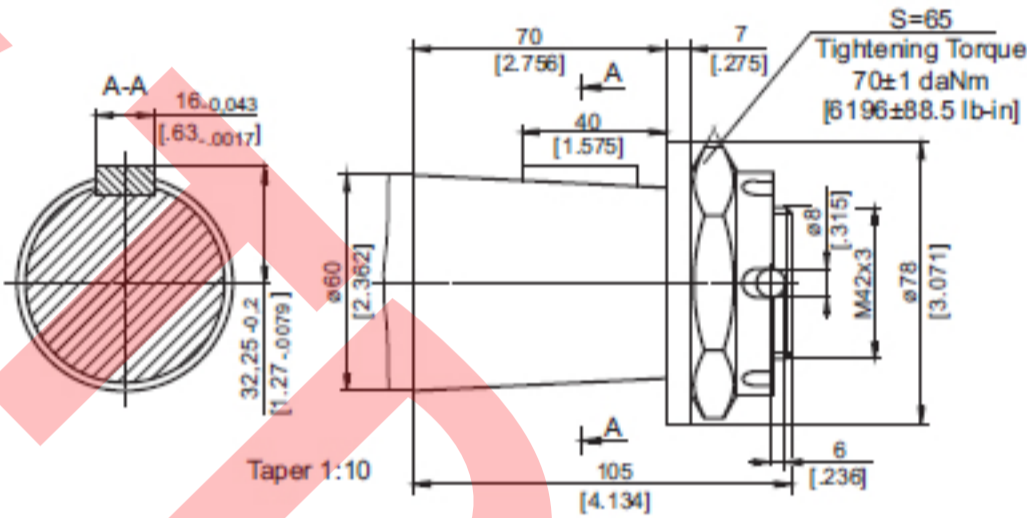
SPECIFICATION DATA

MV 400

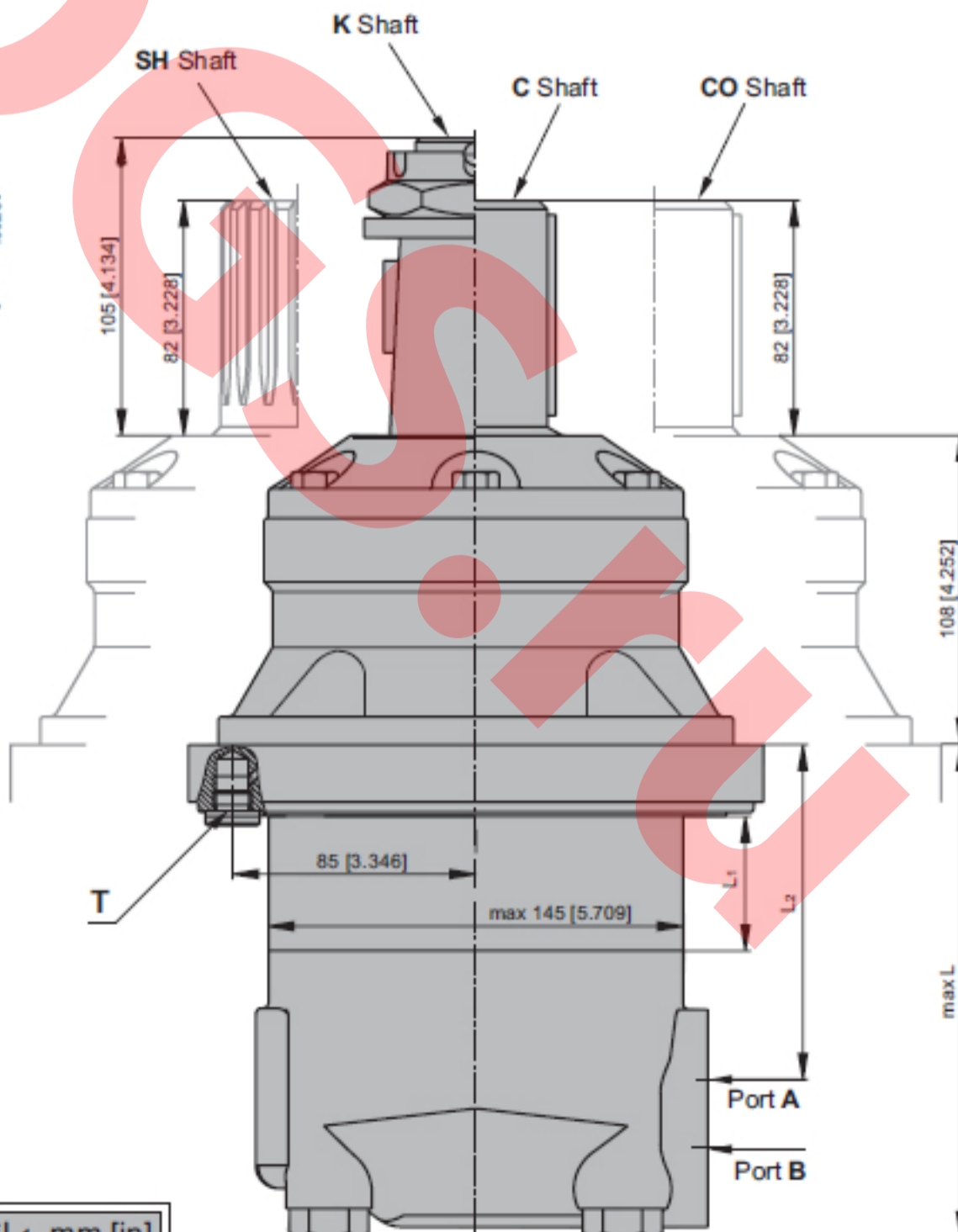
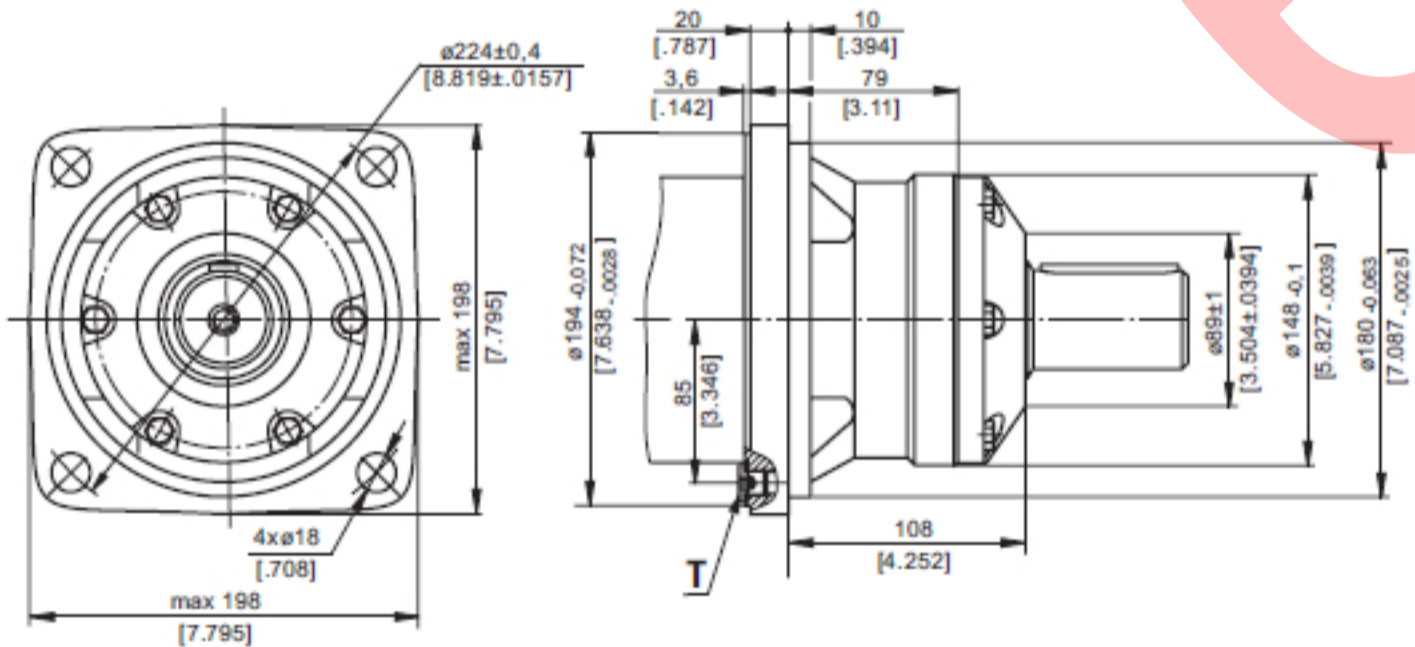
Type		MV 400
Displacement, cm ³ /rev [In ³ /rev]		400,9 [24.45]
Max. Speed, [RPM]	Cont.	500
	Int.*	600
Max. Torque daNm [lb-in]	Cont.	118 [10450]
	Int.*	141 [12500]
	Peak**	164 [14500]
Max. Output kW [HP]	Cont.	53,5 [71.7]
	Int.*	64 [85.8]
Max. Pressure Drop bar [PSI]	Cont.	200 [2900]
	Int.*	240 [3480]
	Peak**	280 [4060]
Max. Oil Flow lpm [GPM]	Cont.	200 [52.8]
	Int.*	240 [63.4]
Max. Inlet Pressure bar [PSI]	Cont.	210 [3050]
	Int.*	250 [3620]
	Peak**	300 [4350]
Max. Return Pressure with Drain Line bar [PSI]	Cont.	140 [2040]
	Int.*	175 [2540]
	Peak**	210 [3050]
Max. Starting Pressure with Unloaded Shaft, bar [PSI]		8 [120]
Min. Starting Torque daNm [lb-in]	At max. press. drop Cont.	91 [8100]
	At max. press. drop Int.*	109 [9600]
Min. Speed***, [RPM]		9
Weight, kg [lb]	MV	32,6 [71.9]
	MVW	33,2 [73.2]
	MVS	23,5 [51.8]



K -tapered 1:10, Parallel key B16x10x32 DIN 6885

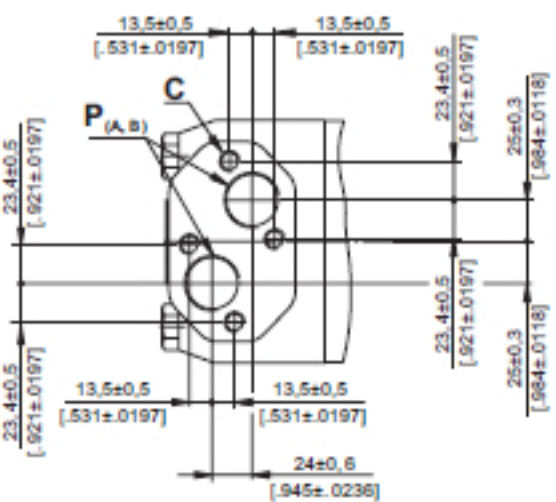


W Wheel Mount



PORTS

Side Ports



- C: 4xM12 - 12 mm [47 in] depth
- P(A,B): 2xG1 - 20 mm [79 in] depth
- T: G 1/4 - 12 mm [47 in] depth

Standard Rotation
Viewed from Shaft End
Port A Pressurized - CW
Port B Pressurized - CCW

Reverse Rotation
Viewed from Shaft End
Port A Pressurized - CCW
Port B Pressurized - CW

Type	L, mm [in]	L2, mm [in]	*L1, mm [in]
MVW 400	153 [6.02]	99 [3.90]	29,0 [1.14]