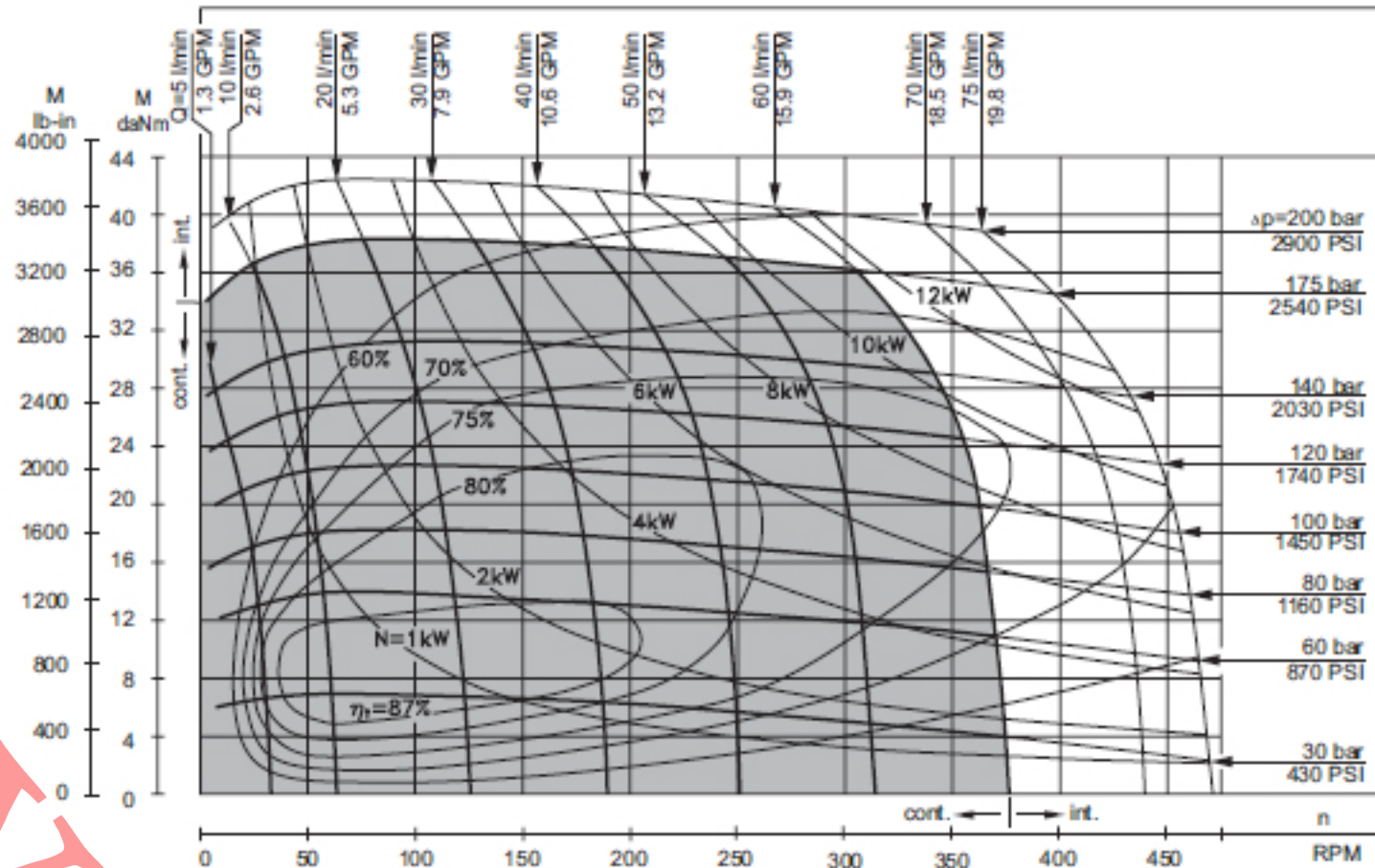


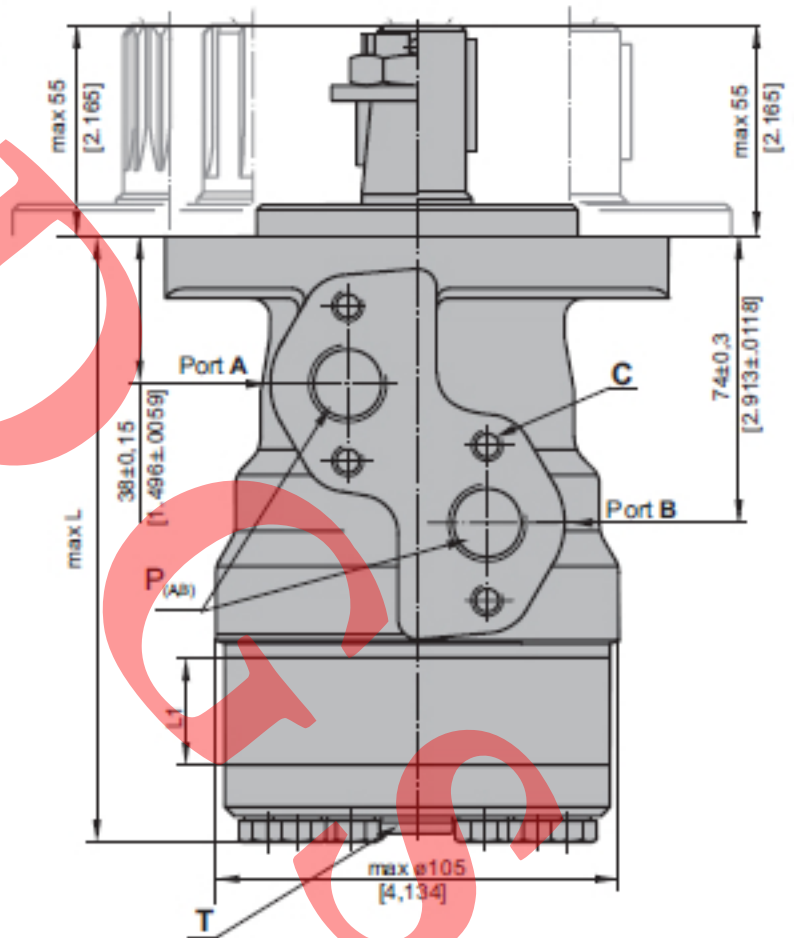
SPECIFICATION DATA

Type	MR
Displacement, cm ³ /rev [in ³ /rev]	159,6 [9.74]
Max. Speed, Cont. [RPM]	375 470
Max. Torque, Cont. daNm [in-lb]	39 [3450] 43 [3805]
Max. Output, Cont. kW [HP]	11,5 [15.4] 14 [18.8]
Max. Pressure Drop, Cont. bar [PSI]	175 [2540] 200 [2900]
Max. Oil Flow, Cont. lpm [GPM]	60 [15.8] 75 [19.8]
Max. Inlet Pressure, Cont. bar [PSI]	175 [2540] 200 [2900]
Max. Return Pressure with Drain Line, Cont. bar [PSI]	175 [2540] 200 [2900]
Max. Starting Pressure with Unloaded Shaft, bar [PSI]	7 [102]
Min. Starting Torque, At max. press. drop Cont. daNm [in-lb]	32 [2832]
Min. Speed ^{**} , [RPM]	10
Weight, kg [lb]	MR(F) 7,5 [15.2] MRQ(N) 7,6 [15.4]



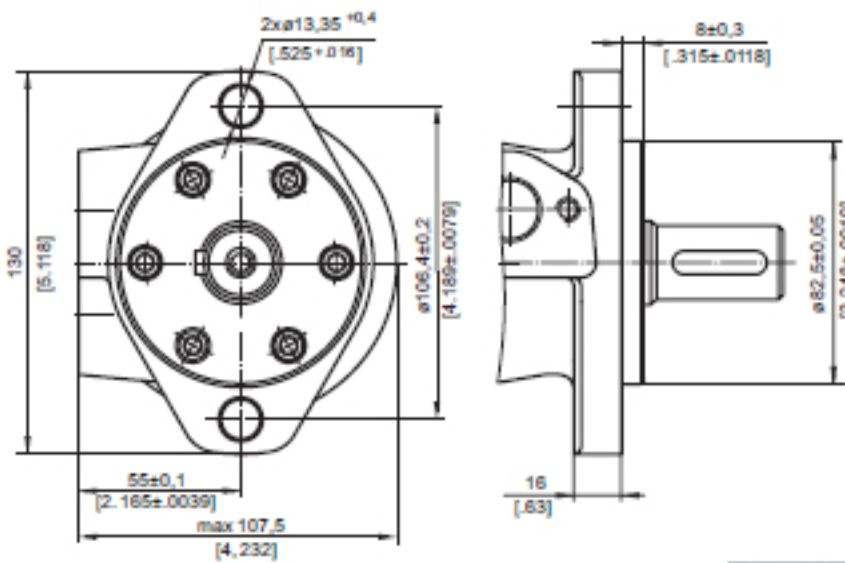
DIMENSIONS AND MOUNTING DATA

Type	L, mm [in]
MR(F) 160	156,5 [6.16]



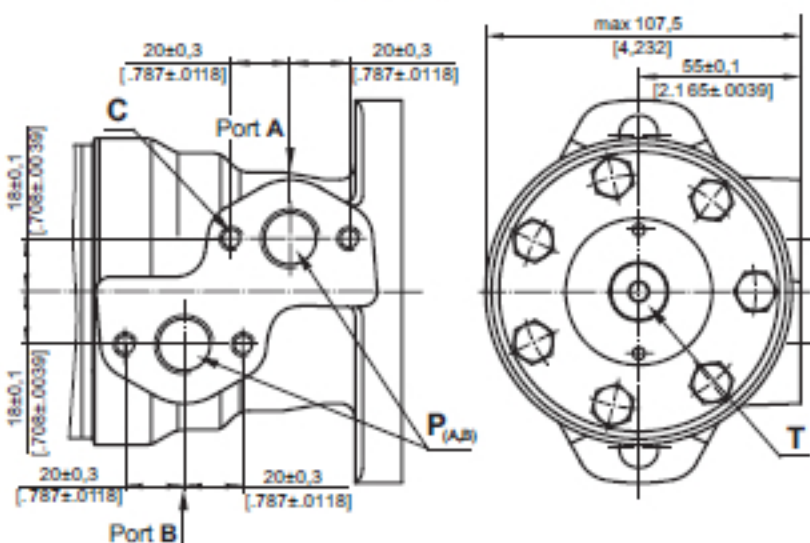
MOUNTING

Oval Mount (2 Holes)



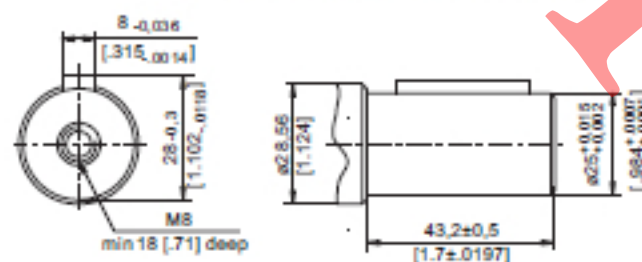
PORTS

Side Ports



SHAFT EXTENSIONS

C - ø25 straight, Parallel key A8x7x32 DIN 6885
Max. Torque 34 daNm [3010 lb-in]



- C : 4xM8 - 13 mm [.51 in] depth
- P_(A,B): 2xG 1/2 or 2xM22x1,5 - 15 mm [.59 in] depth
- T : G 1/4 or M14x1,5 - 12 mm [.47 in] depth (plugged)