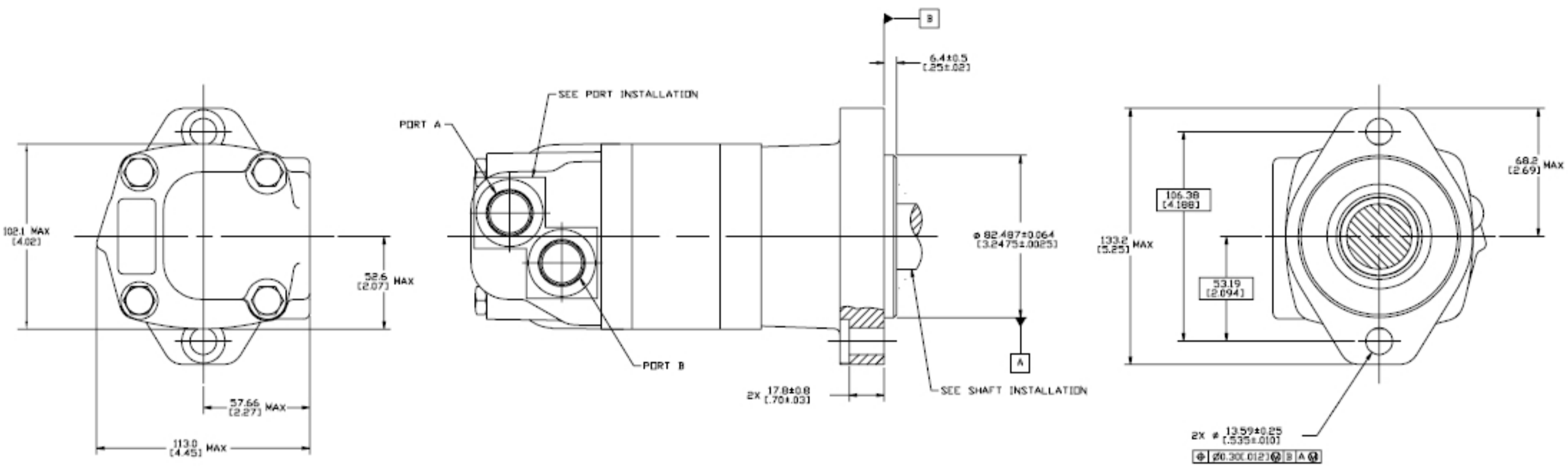


SYN	REVISION	BY	DATE	ECN
A	ENGINEERING RELEASE	RAF	3/7/93	23726
B	REVISED	AGJ	5-26-93	22833
C	(ADDED DISTRIBUTION CODE C	AGJ	5-13-02	41044
D	(NOTE 2 WAS MOUNTING TYPE: C	AGJ	5-17-04	47918
E	REVISED	VJB	4-4-05	54522
F	-1)REVISED AS PER STACK-UP -2)DRAWING UPDATED AS PER ASME Y14.5-2009 STANDARD	JVD	04-28-15	M96611

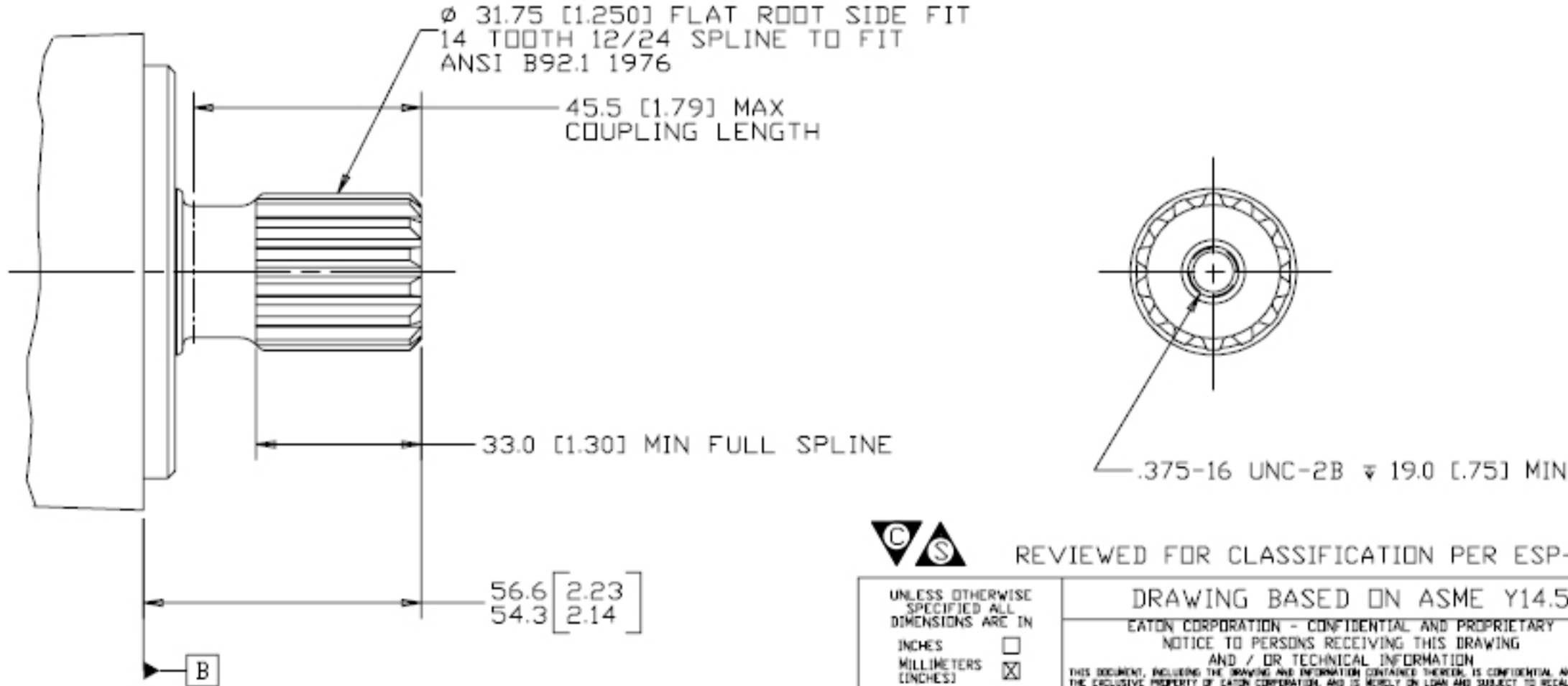


NOTE
 1 ROTATION
 STANDARD: WHEN FACING SHAFT END OF MOTOR, SHAFT TO ROTATE, CLOCKWISE WHEN PORT "A" IS PRESSURIZED, COUNTERCLOCKWISE WHEN PORT "B" IS PRESSURIZED
 REVERSE: WHEN FACING SHAFT END OF MOTOR, SHAFT TO ROTATE, COUNTERCLOCKWISE WHEN PORT "B" IS PRESSURIZED, CLOCKWISE WHEN PORT "A" IS PRESSURIZED
 2 MOUNTING TYPE: AC
 STANDARD, 2 BOLT, # 826 (325) PILOT
 # 1359 (535) HOLES ON # 106.4 (4.19)
 BOLT CIRCLE "SAE A"

REVIEWED FOR CLASSIFICATION PER ESP-042

UNLESS OTHERWISE SPECIFIED ALL DIMENSIONS ARE IN INCHES	DRAWING BASED ON ASME Y14.5-2009	
TOLERANCES	EATON CORPORATION - CONFIDENTIAL AND PROPRIETARY NOTICE TO PERSONS RECEIVING THIS DRAWING AND / OR TECHNICAL INFORMATION	
XX ± REF	DATE: 3-7-93	MATERIAL/HEAT TREAT
XXX ± ONLY	CHECKED BY: S. RICHARDS	TITLE: 2000 SERIES MOTOR INSTALLATION
UNSPECIFIED RADI ARE	ENGRG BY: M. BERNSTROM	NUMBER: A-665-001
UNSPECIFIED DRAFT ANGLES ARE	METALLURGY BY: DATE	SCALE: 1/1
B SIZE	DO NOT SCALE	SHEET 1 OF 1

REV	DESCRIPTION	BY	DATE	ECN
A	ENGINEERING RELEASE	RAF	3/7/93	23726
B	-1)NOTE 1 WAS OPTION 3 -2)NOTE 2 WAS OPTION 05	AGJ	5-26-93	22833
C	NOTE 1 WAS MOUNTING TYPE: OPTION C	AGJ	5-13-02	41044
D	56.4/54.3 [2.22/2.14] WAS 56.7/54.3 [2.23/2.14]	AGJ	5-17-04	47918
E	NOTE 2 WAS OUTPUT SHAFT: OPTION 04 & 28	PM	4-4-05	54522
F	-1)56.6/54.3 [2.23/2.14] WAS 56.4/54.3 [2.22/2.14] -2)DRAWING UPDATED AS PER ASME Y14.5-2009 STANDARD	JVD	04-28-15	M96613



REVIEWED FOR CLASSIFICATION PER ESP-042

UNLESS OTHERWISE SPECIFIED ALL DIMENSIONS ARE IN INCHES	DRAWING BASED ON ASME Y14.5-2009	
TOLERANCES	EATON CORPORATION - CONFIDENTIAL AND PROPRIETARY NOTICE TO PERSONS RECEIVING THIS DRAWING AND / OR TECHNICAL INFORMATION	
XX ± REF	DATE: 3/9/93	MATERIAL/HEAT TREAT
XXX ± ONLY	CHECKED BY: S. RICHARDS	TITLE: 2000 SERIES MOTOR SHAFT INSTALLATION
UNSPECIFIED RADI ARE	ENGRG BY: M. BERNSTROM	NUMBER: A-683-004
UNSPECIFIED DRAFT ANGLES ARE	METALLURGY BY: DATE	SCALE: 1/1
B SIZE	DO NOT SCALE	SHEET 1 OF 1

NOTE
 1 MOUNTING TYPE: OPTION AC, BA & BE
 2 OUTPUT SHAFT: OPTION 04 & 21