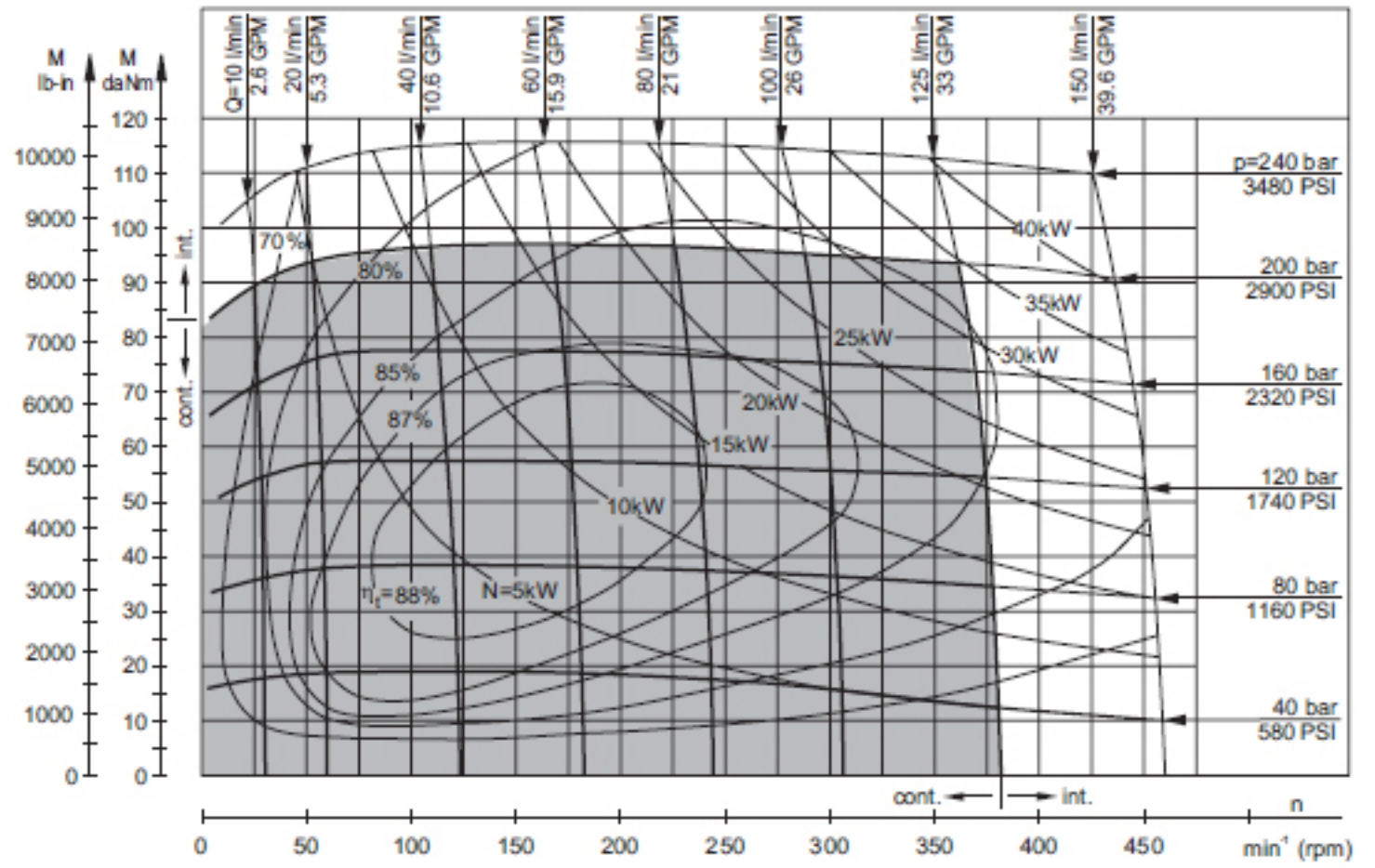


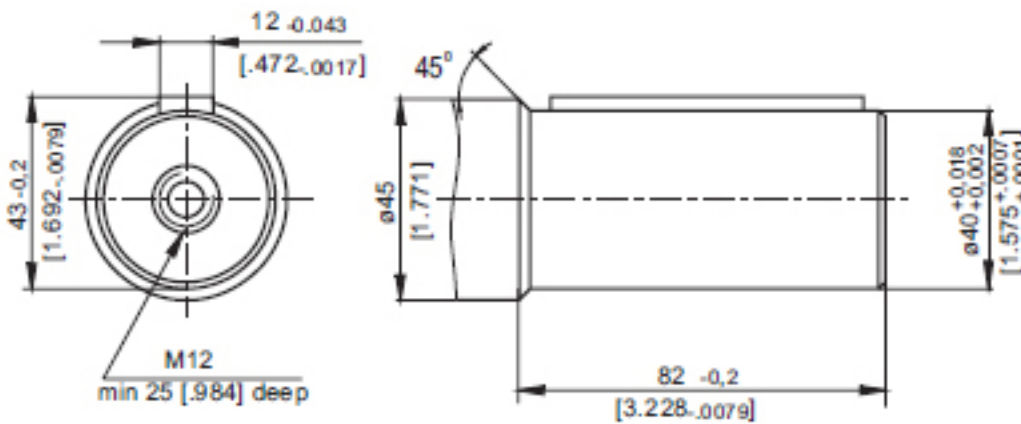
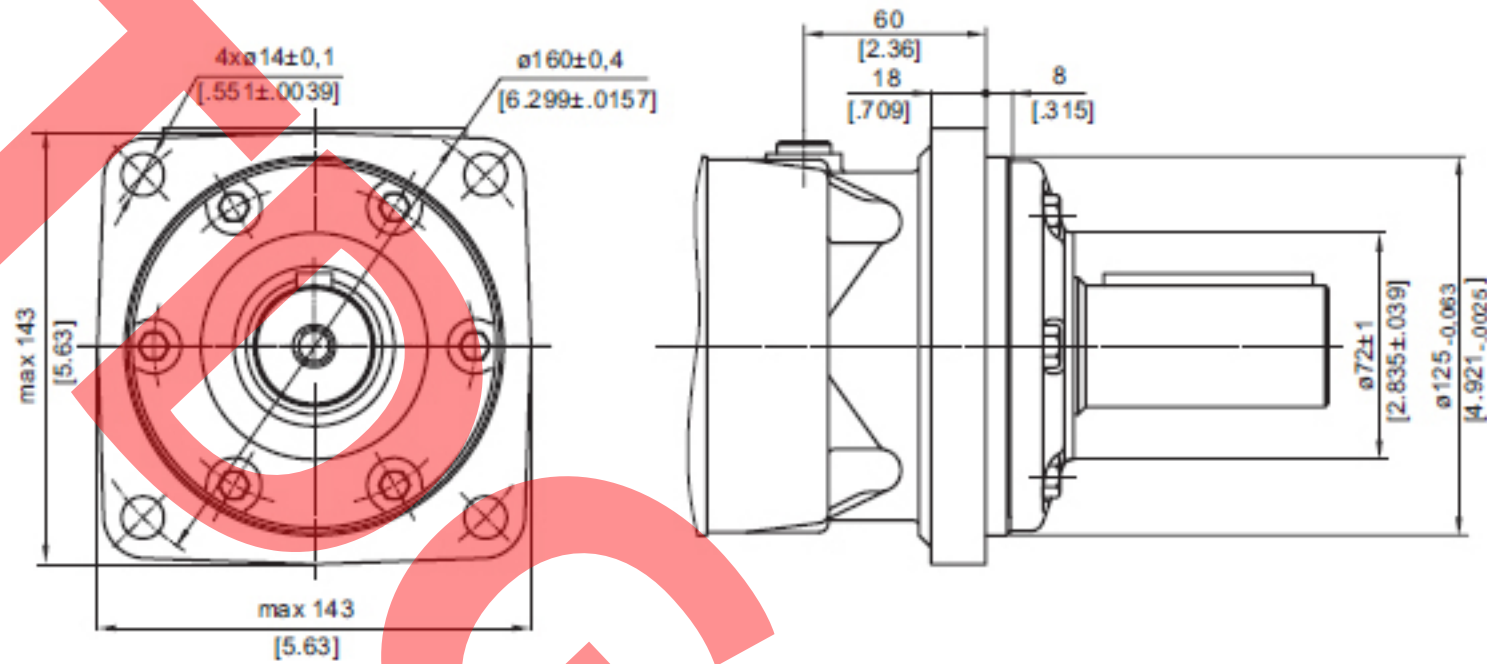
SPECIFICATION DATA

Type		
Displacement, cm ³ /rev [in ³ /rev]		326,3 [19.90]
Max. Speed, [RPM]	Cont.	382
	Int.*	461
Max. Torque daNm [lb-in]	Cont.	95 [8410]
	Int.*	114[10090]
	Peak**	133[11770]
Max. Output kW [HP]	Cont.	33,5 [45]
	Int.*	40 [54]
Max. Pressure Drop bar [PSI]	Cont.	200 [2900]
	Int.*	240 [3480]
	Peak**	280 [4050]
Max. Oil Flow lpm [GPM]	Cont.	125 [33]
	Int.*	150 [39.6]
Max. Inlet Pressure bar [PSI]	Cont.	210 [3050]
	Int.*	250 [3600]
	Peak**	300 [4350]
Max. Return Pressure with Drain Line bar [PSI]	Cont.	140 [2000]
	Int.*	175 [2500]
	Peak**	210 [3000]
Max. Starting Pressure with Unloaded Shaft, bar [PSI]		10 [150]
Min. Starting Torque daNm [lb-in]	At max. press. drop Cont.	74 [6550]
	At max. press. drop Int.*	89 [7880]
Min. Speed***, [RPM]		7
Weight, kg [lb] For Rear Ports +0,450 [.992]	MT	22 [48.5]
	MTW	24 [52.9]
	MTS	17 [37.5]
	MTV	13 [28.7]



ø40 straight, Parallel key A12x8x70 DIN 6885
Max. Torque 132,8 daNm [11755 lb-in]

Square Mount (4 Holes)



- C: 4xM10-10 mm [.39 in] depth
- P_(A,B): 2xG3/4 or 2xM27x2-17 mm [.67 in] depth
- T: G 1/4 or M14x1,5 - 12 mm [.47 in] depth (plugged)

Standard Rotation
Viewed from Shaft End
Port A Pressurized - CW
Port B Pressurized - CCW

Reverse Rotation
Viewed from Shaft End
Port A Pressurized - CCW
Port B Pressurized - CW

Type	L, mm [in]	L ₂ , mm [in]	**L _E , mm [in]
MT 315	211 [8.31]	161 [6.34]	221 [8.70]

