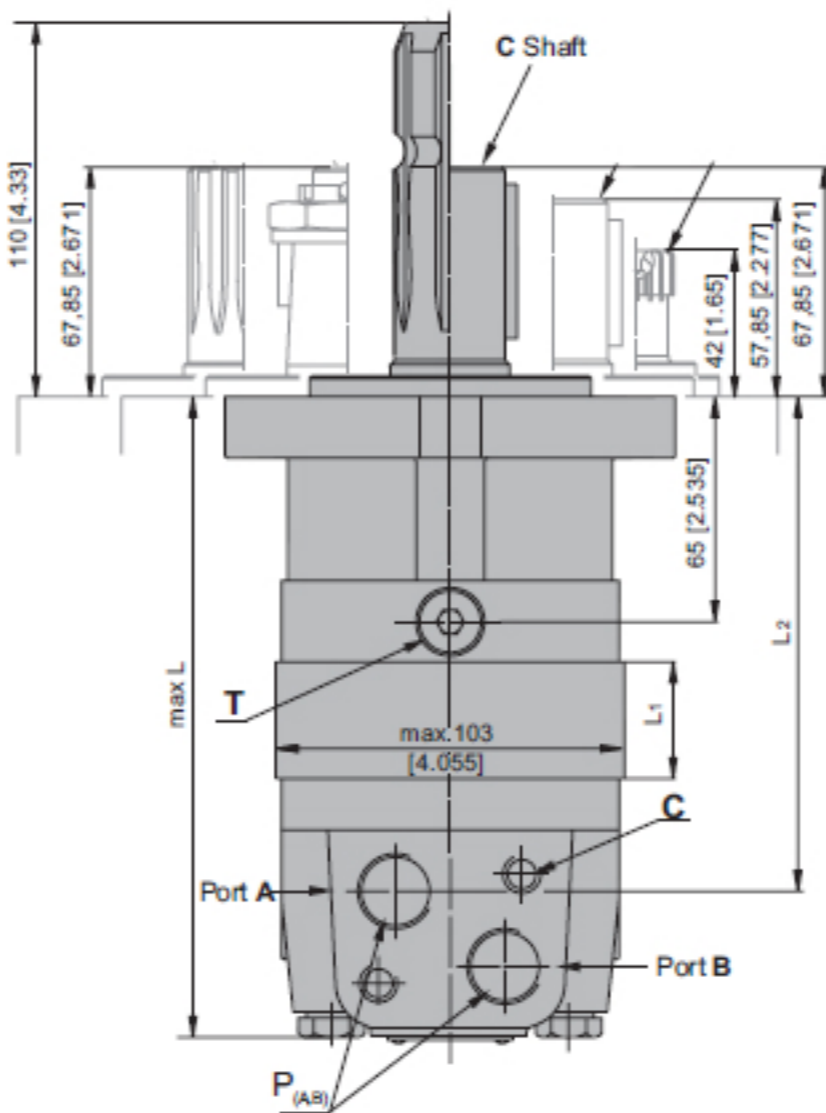
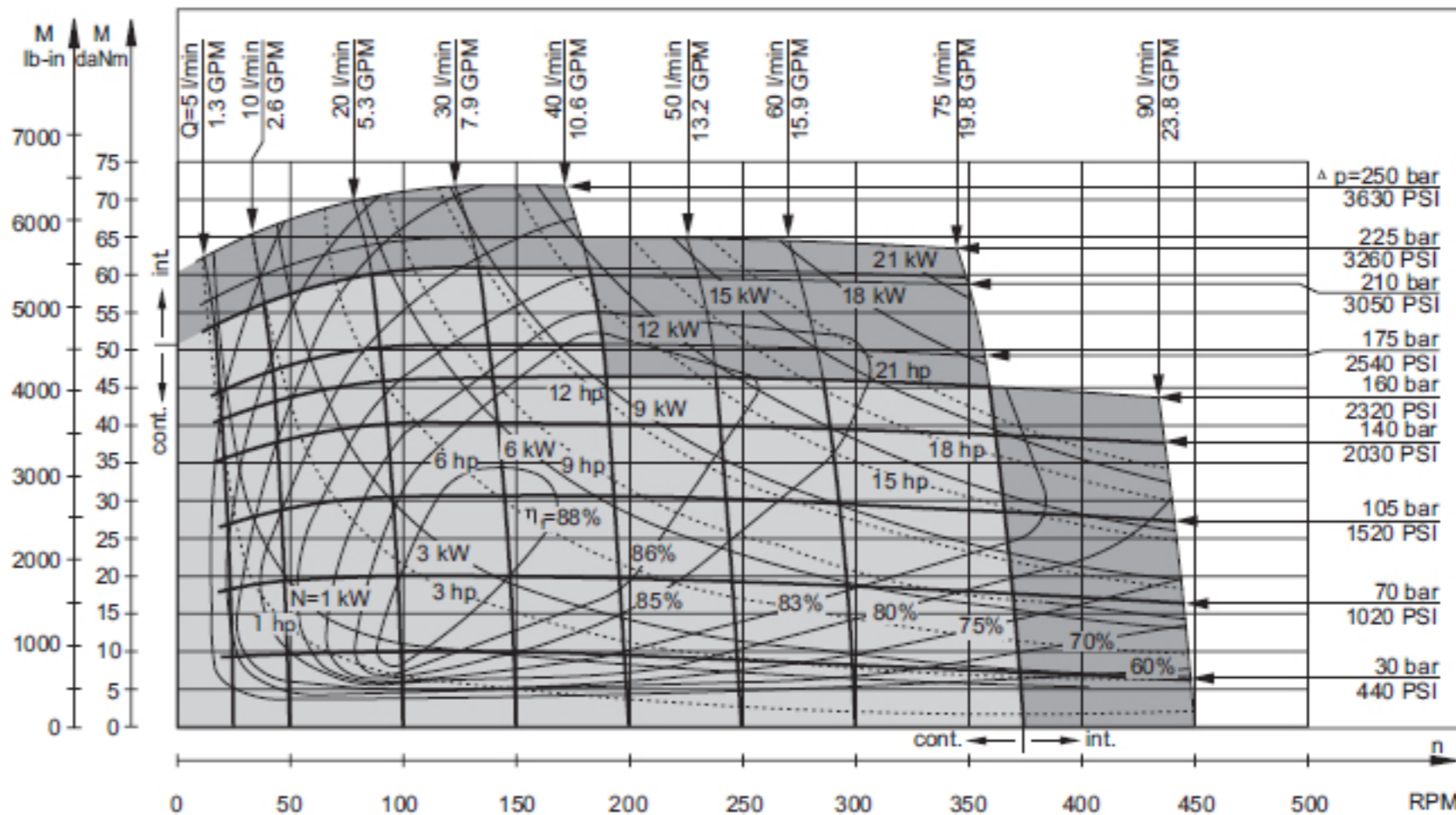


SPECIFICATION DATA

Type		MS 200
Displacement, cm ³ /rev [in ³ /rev]		200 [12.2]
Max. Speed, [RPM]	cont. Int.*	375 450
Max. Torque daNm [lb-in]	cont. Int.*	61 [5400] 72 [6370]
Max. Output kW [HP]	cont. int.*	16,5 [22.1] 22 [29.52]
Max. Pressure Drop bar [PSI]	cont. Int.* peak**	210 [3050] 275 [3990] 295 [4280]
Max. Oil Flow lpm [GPM]	cont. Int.*	75 [20] 90 [24]
Max. Inlet Pressure bar [PSI]	cont. Int.* peak**	230 [3340] 295 [4280] 300 [4350]
Max. Return Pressure with Drain Line bar [PSI]	cont. Int.* peak**	140 [2030] 175 [2540] 210 [3050]
Max. Starting Pressure with Unloaded Shaft, bar [PSI]		8 [115]
Min. Starting Torque daNm [lb-in]	at max. press. drop cont. at max. press. drop Int.*	47 [4160] 56 [4960]
Min. Speed***, [RPM]		6
Weight, kg [lb]	MS(F) MSW MSS MSV MSQ MSB	11,2 [24.7] 11,7 [25.8] 9,2 [20.2] 7,1 [15.6] 11,6 [25.6] 18,2 [41.1]
For Rear Ports + 0,40 [.88]		

MS 200



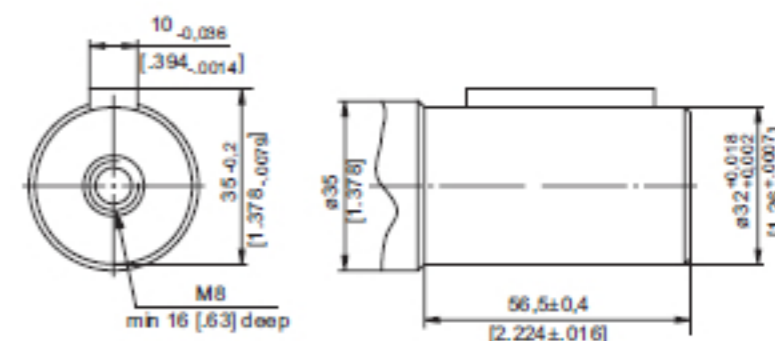
C: 2xM10-12 mm [.47 in] depth
P_(A,B): 2xG1/2 or 2xM22x1,5-15 mm [.59 in] depth
T: G 1/4 or M14x1,5- 12 mm [.47 in] depth (plugged)

Standard Rotation
Viewed from Shaft End
Port A Pressurized - CW
Port B Pressurized - CCW

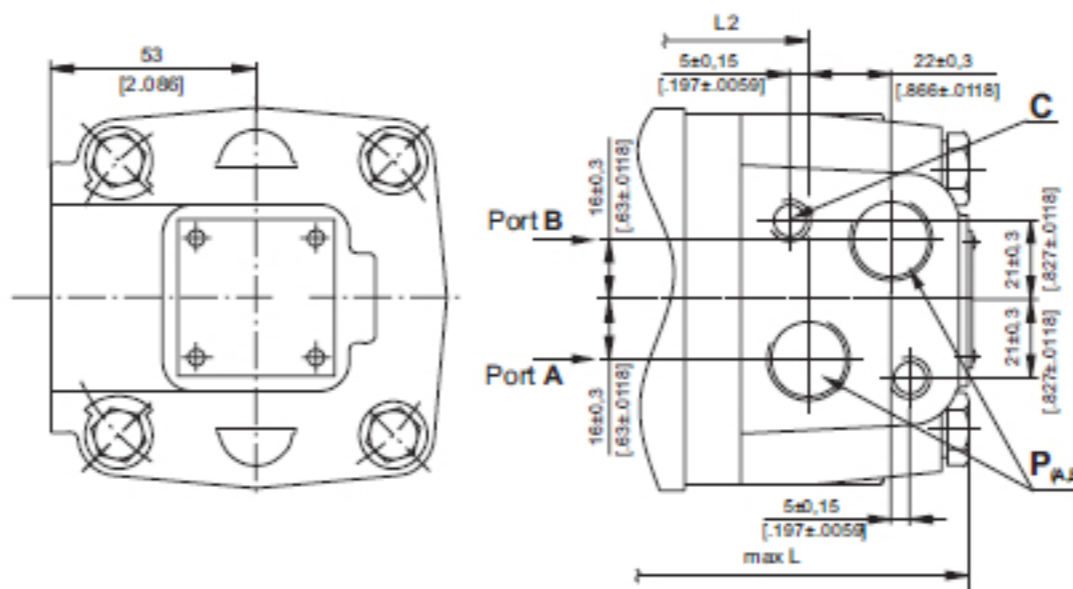
Reverse Rotation
Viewed from Shaft End
Port A Pressurized - CCW
Port B Pressurized - CW

Type	L, mm[in.]	L ₂ , mm[in.]	*L _E , mm[in.]
MS(F, A) 200	189 [7.44]	145 [5.71]	194 [7.64]

C - ø32 straight, Parallel key A10x8x45 DIN 6885
Max. Torque 77 daNm [6815 lb-in]



Side Ports



SAE A-4 Mount (4 Holes)

