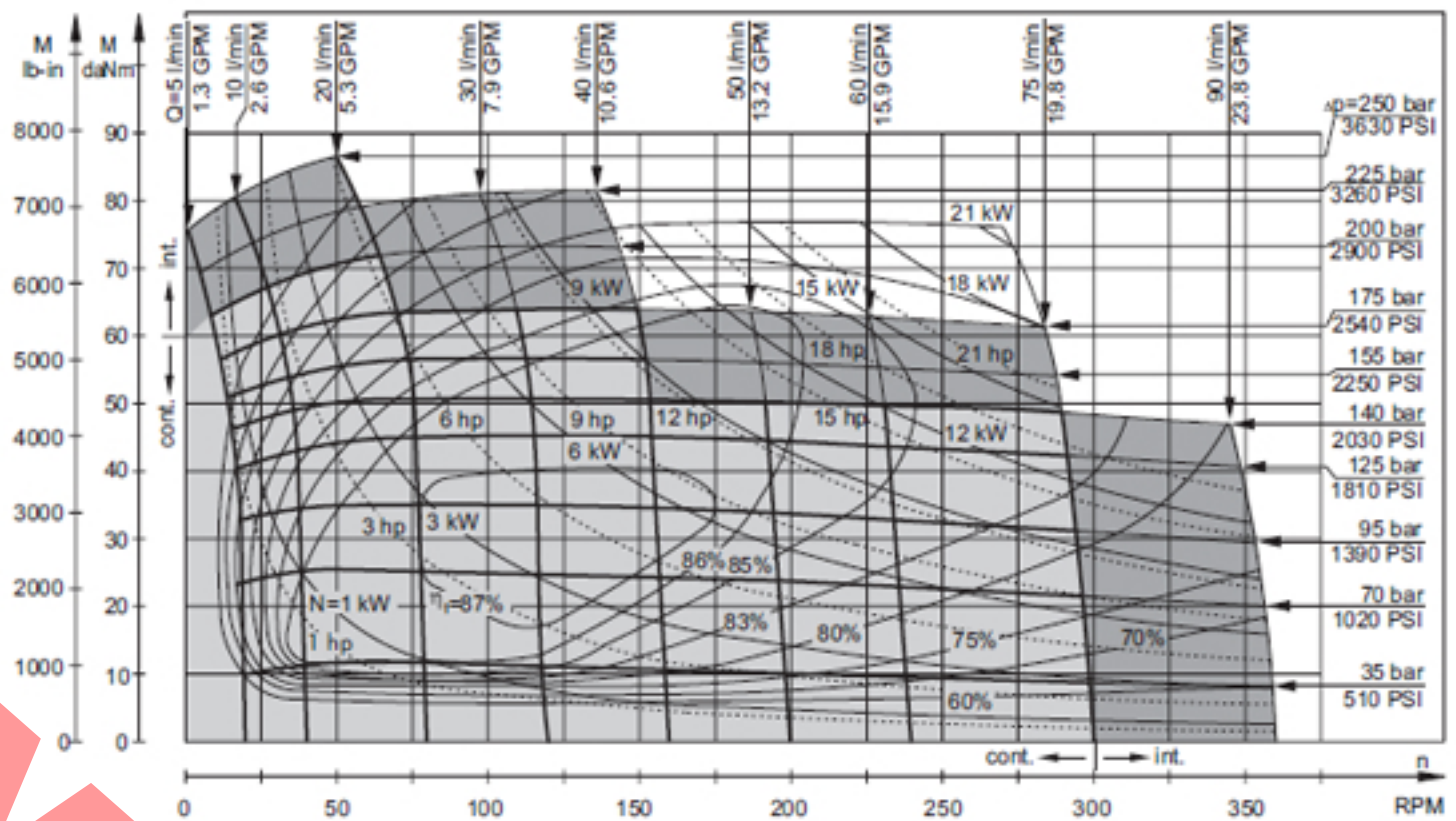


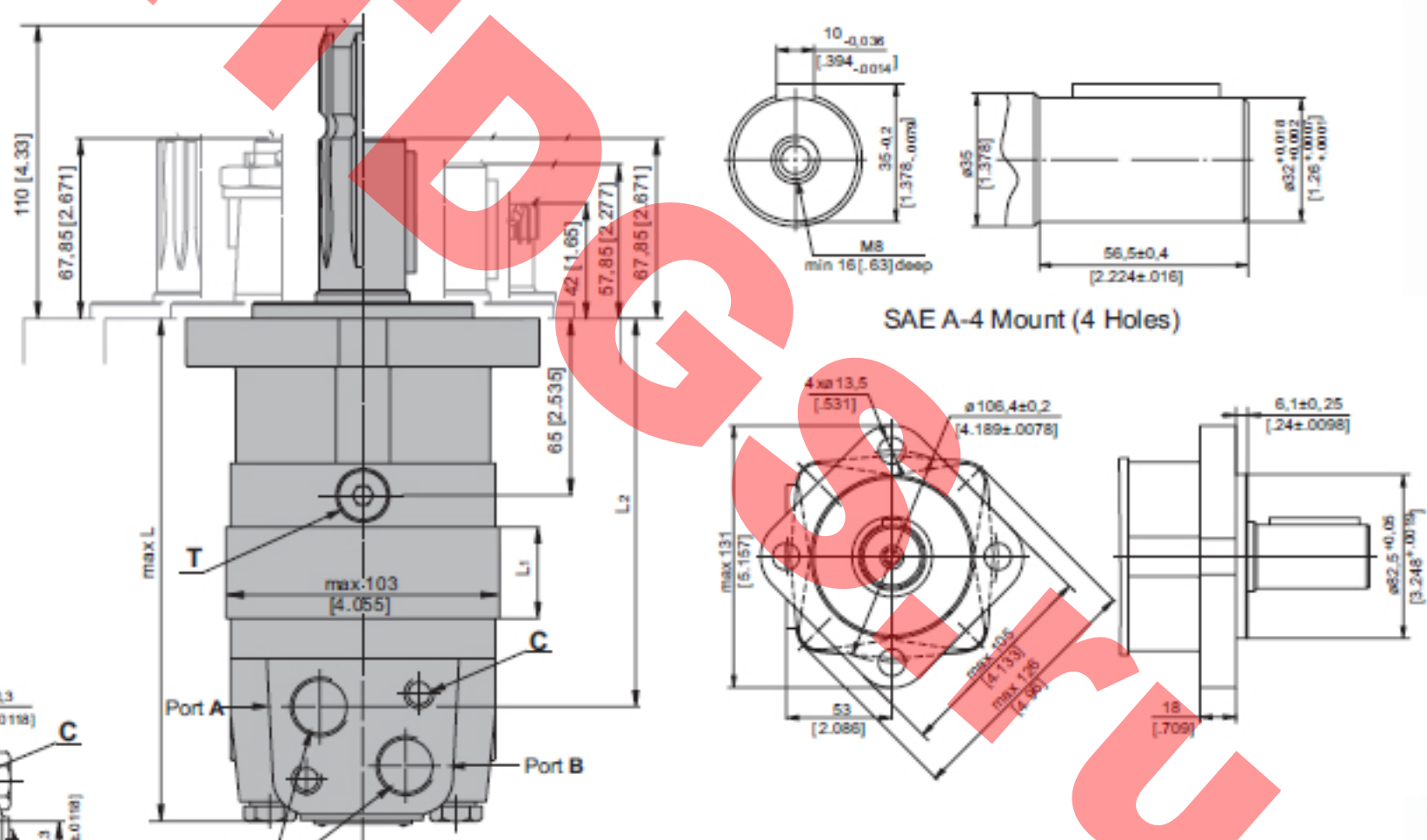
SPECIFICATION DATA

Type		MS 250
Displacement, cm ³ /rev [in ³ /rev]		250 [15.3]
Max. Speed, [RPM]	cont.	300
	Int.*	360
Max. Torque	cont.	72 [6370]
daNm [lb-in]	Int.*	87 [7700]
Max. Output	cont.	14,5 [19.4]
kW [HP]	Int.*	18 [24.1]
Max. Pressure Drop	cont.	200 [2900]
bar [PSI]	Int.*	250 [3630]
	peak**	270 [3920]
Max. Oil Flow	cont.	75 [20]
lpm [GPM]	Int.*	90 [24]
Max. Inlet Pressure	cont.	230 [3340]
bar [PSI]	Int.*	295 [4280]
	peak**	300 [4350]
Max. Return Pressure with Drain Line	cont.	140 [2030]
bar [PSI]	Int.*	175 [2540]
	peak**	210 [3050]
Max. Starting Pressure with Unloaded Shaft, bar [PSI]		8 [115]
Min. Starting Torque	at max. press. drop cont.	56 [4960]
daNm [lb-in]	at max. press. drop Int.*	70 [6200]
Min. Speed***, [RPM]		6
Weight, kg [lb]	MS(F)	11,7 [25.8]
	MSW	12,2 [26.9]
For Rear Ports + 0,40 [.88]	MSS	9,7 [21.4]
	MSV	7,6 [16.7]
	MSQ	12,1 [26.7]
	MSB	18,7 [41.2]

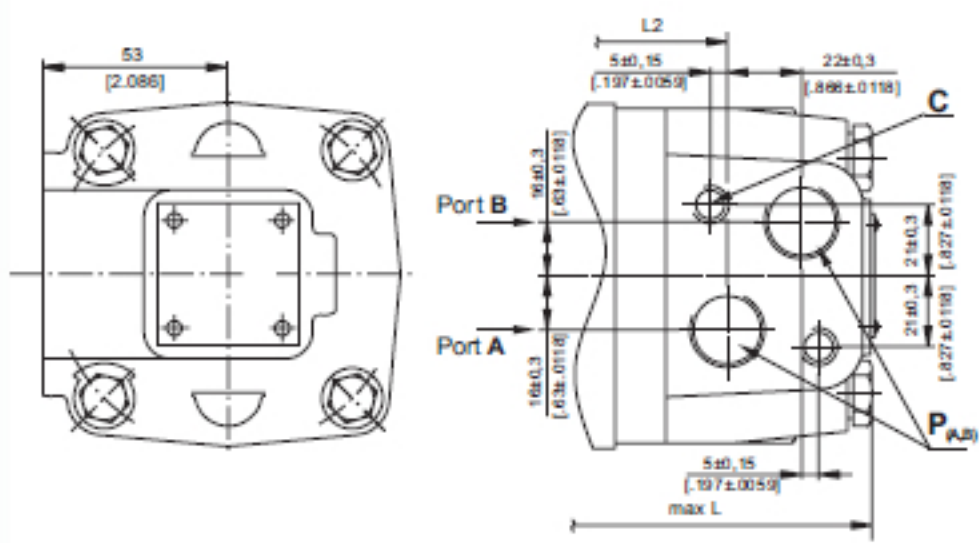
MS 250



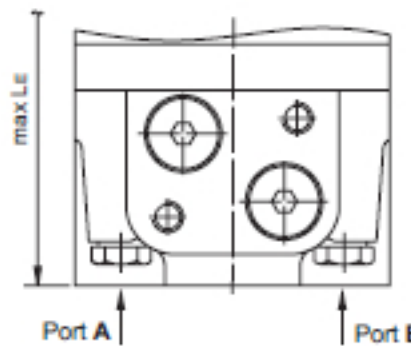
ø32 straight, Parallel key A10x8x45 DIN 6885
Max. Torque 77 daNm [6815 lb-in]



Side Ports



Type	L, mm[in.]	L ₂ , mm[in.]	*L _E , mm[in.]
MS(F, A) 250	197 [7.76]	154 [6.06]	203 [7.99]



C: 2xM10-12 mm [.47 in] depth
P_(AB): 2xG1/2 or 2xM22x1,5-15 mm [.59 in] depth
T: G ¼ or M14x1,5-12 mm [.47 in] depth (plugged)

Standard Rotation
Viewed from Shaft End
Port A Pressurized - CW
Port B Pressurized - CCW

Reverse Rotation
Viewed from Shaft End
Port A Pressurized - CCW
Port B Pressurized - CW

