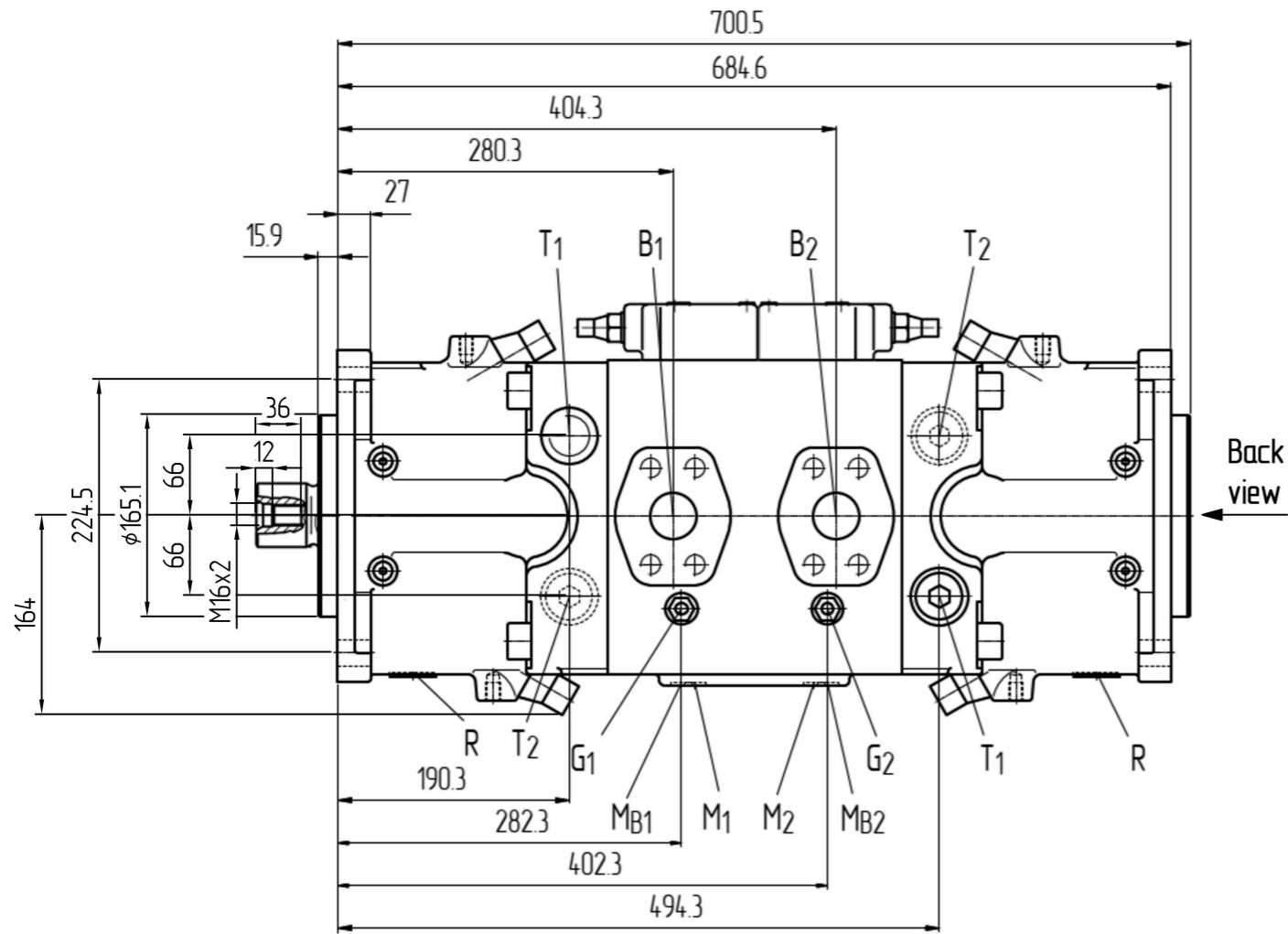
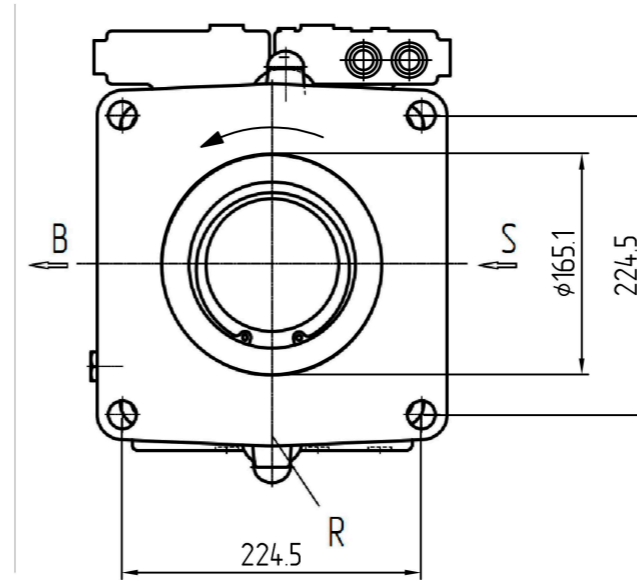


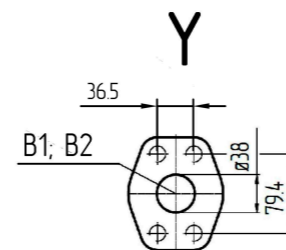
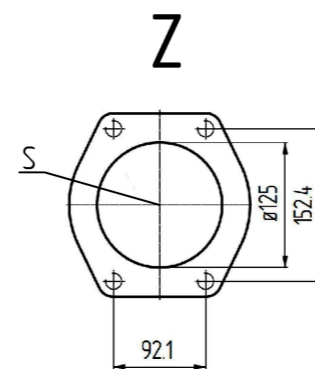
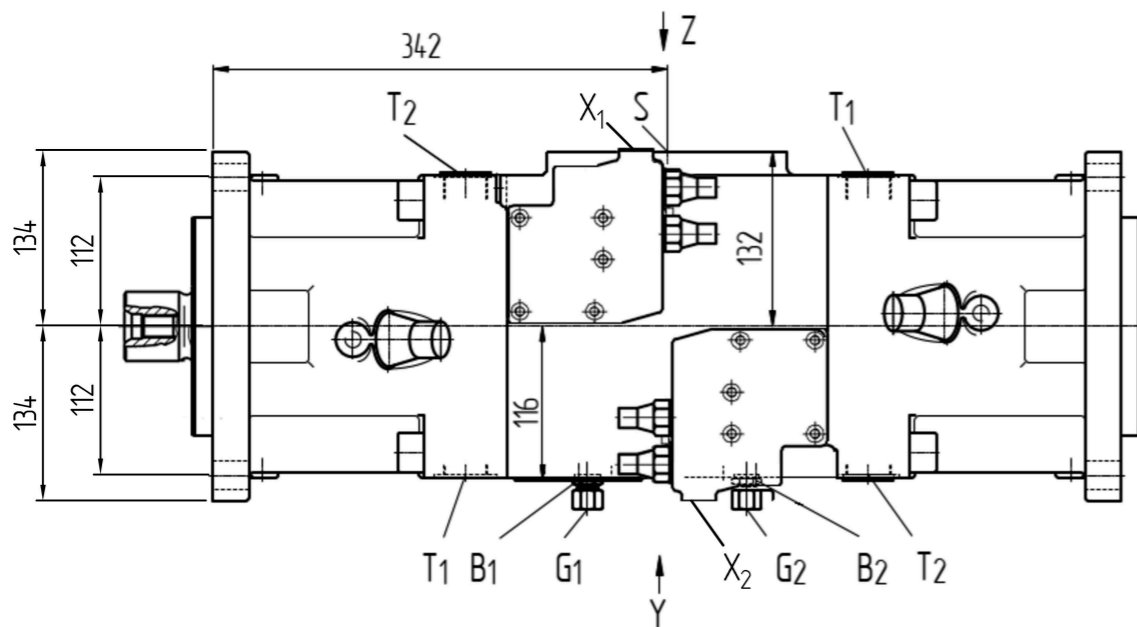
Right view



Back view



Top view



DRS - Pressure control with load sensing
The load sensing control works as a flow controller controlled by load pressure and coordinates the pump displacement to the quality required by the actuator.

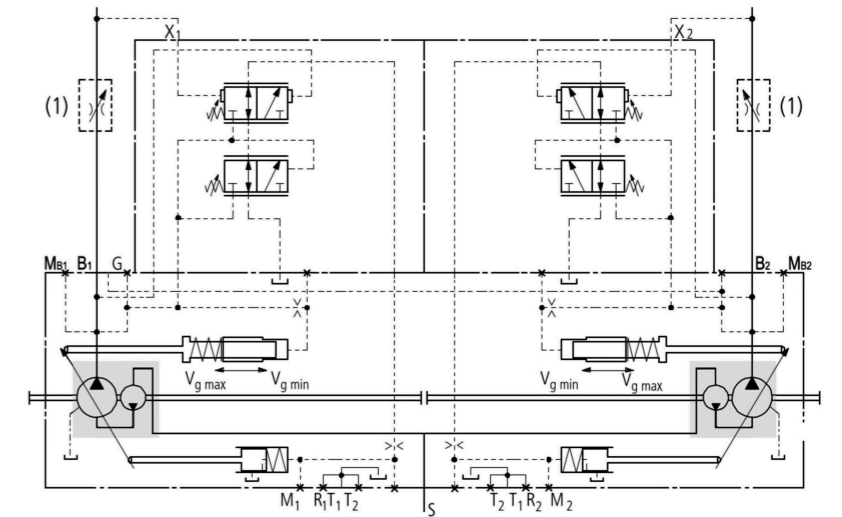
The pump flow depends on the external orifice (control block, throttle valve) switched between the pump and the actuator, but is not affected by the load pressure over the whole range below the pressure signal value.

The valve compares the pressure upstream of the orifice with the downstream pressure and keeps the pressure drop (differential pressure Δp) occurring here, and hence the flow, constant.

If the differential pressure rises, the pump is swivelled back (direction V_g min). If the differential pressure Δp drops, the pump is swivelled out (direction V_g max), until balance is restored in the valve.

$$\Delta p_{\text{orifice}} = p_{\text{pump}} - p_{\text{actuator}}$$

(1) The orifice (throttle valve) is not included in the supply



Specification	
Displacement	192,7 cc/rev
Connection flange	SAE J744 (4 holes)
Drive shaft	DIN 5480 (W50x2x30x24x9g)
Rotation speed	min 500 RPM max 2500 RPM
Rated Pressure	350 bar
Peak Pressure	400 bar
Max pressure case	4 bar
Suction pressure	35 bar
Seals material	NBR

Part	Specifications
B1, B2	Service part (with charging pump) SAE 1 1/2
S	Suction part (with charging pump) SAE 5
T1, T2	Case drain M33x2; 16 deep
R1, R2	Air bleed, oil drain M33x2; 16 deep
M1, M2	Gauge point positioning chamber M12x1,5; 12 deep
MB1, MB2	Gauge point for service part M12x1,5; 12 deep
X1, X2	Pilot part M14x1,5; 12 deep
G	Control pressure port (controller) M14x1,5; 12 deep

Metoda zobrazení: ISO-E	Index zářezů:	Číslo zářezů: _____	Datum: _____	Číslo verze: 001	1902000414
Všeobecný parametr drsnosti povrchu: Ra [µm]	Průměr [mm]: Matyáš Bunta	Vypracoval: Matyáš Bunta	Datum: 14.10.2021	 J20VLO 190DRS/10R-NZD 24N00	
Neoznačené hrany a přechody bez ostřepů, max. zaoblení R0,2 (0,2x45°)	Schválil: _____	Číslo kopie: _____	Datum: _____		
Všeobecný tolerance dle ČSN ISO 2768-Třída přesnosti: cK	Číslo palatování: _____	Číslo výrobku: 11	Typ výrobku: _____	VIZ TABULKA SEE THE TABLE	
Dělkové rozměry podle ČSN ISO 2768m	Hmotnost (kg): _____	Měřítko: 1:1	Formát výkresu: A2	Formát výkresu: A2	