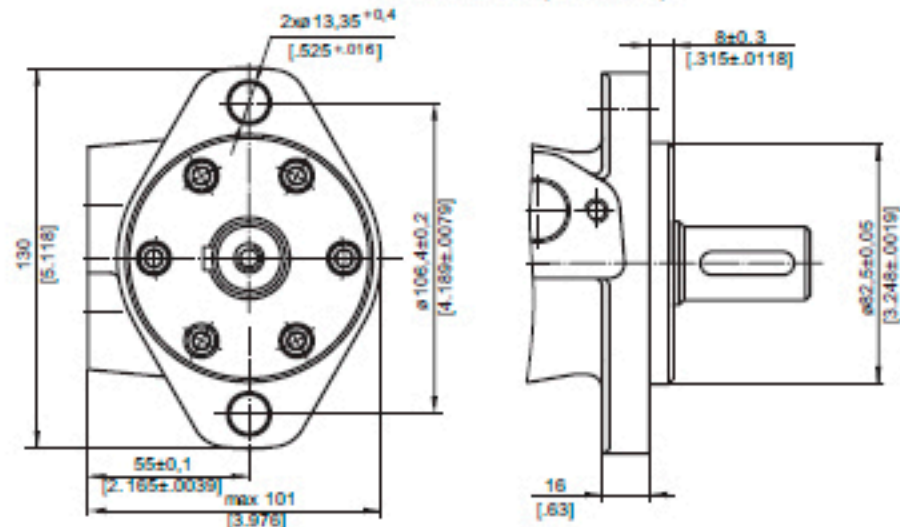


# SPECIFICATION DATA

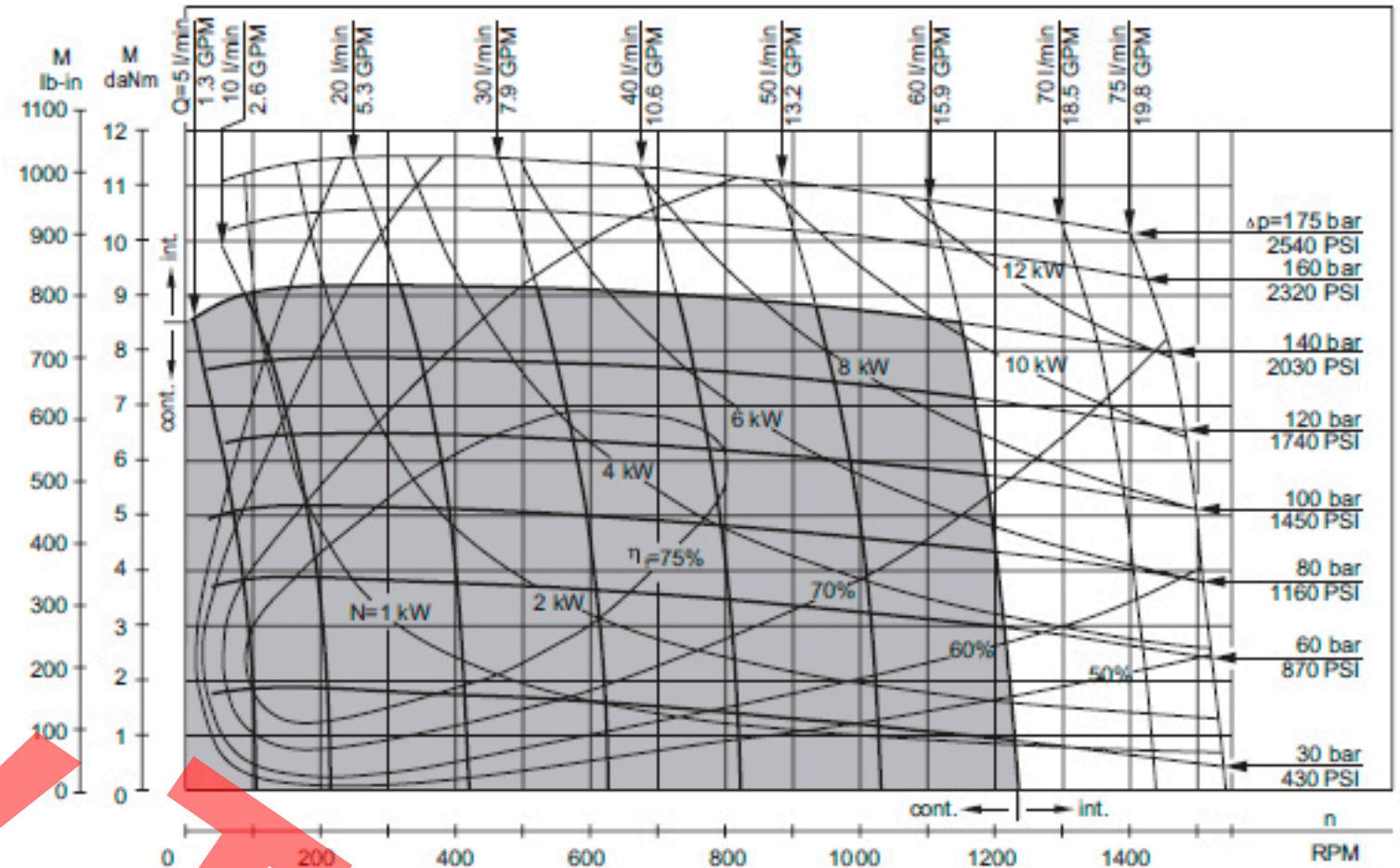
| Type  |                          | MP 50                 |            |
|---|--------------------------|-----------------------|------------|
| Displacement, cm <sup>3</sup> /rev [in <sup>3</sup> /rev] |                          | 49,5 [3.02]           |            |
| Max. Speed, [RPM]   | Cont.                    | 1210                  |            |
|   | Int.*                    | 1515                  |            |
| Max. Torque daNm [lb-in]                                  | Cont.                    | 9,4 [835]             |            |
|   | Int.*                    | 11,9 [1050]           |            |
| Max. Output kW [HP]                                       | Cont.                    | 10,1 [13.5]           |            |
|   | Int.*                    | 12,2 [16.1]           |            |
| Max. Pressure Drop bar [PSI]                              | Cont.                    | 140 [2030]            |            |
|   | Int.*                    | 175 [2540]            |            |
|   | Peak**                   | 225 [3260]            |            |
| Max. Oil Flow lpm [GPM]                                   | Cont.                    | 60 [15.9]             |            |
|   | Int.*                    | 75 [19.8]             |            |
| Max. Inlet Pressure bar [PSI]                             | Cont.                    | 175 [2540]            |            |
|   | Int.*                    | 200 [2900]            |            |
|   | Peak**                   | 225 [3260]            |            |
| Max. Return Pressure with Drain Line bar [PSI]            | Cont.                    | 175 [2540]            |            |
|   | Int.*                    | 200 [2900]            |            |
|   | Peak**                   | 225 [3260]            |            |
| Max. Starting Pressure with Unloaded Shaft, bar [PSI]     |                          | 10 [145]              |            |
| Min. Starting Torque daNm [lb-in]                         | At max.press. drop Cont. | 7,8 [690]             |            |
|   | At max.press. drop Int.* | 10 [885]              |            |
| Min. Speed***, [RPM]                                      |                          | 10                    |            |
| Weight, kg [lb]   | MP(F)(N)                 | 5,8 [12.8]            |            |
|   |                          | For rear ports MPW(N) | 5,5 [12.1] |
|   |                          | MPQ(N)                | 5,2 [11.5] |

C : 4xM8 - 13 mm [.51 in] depth  
 P<sub>(A,B)</sub> : 2xG1/2 or 2xM22x1,5 - 15 mm [.59 in] depth  
 T : G1/4 or M14x1,5 - 12 mm [.47 in] depth (plugged)

### Oval Mount (2 Holes)



## MP 50



| Type     | L, mm [in]   |
|----------|--------------|
| MP(F) 50 | 135,5 [5.33] |

