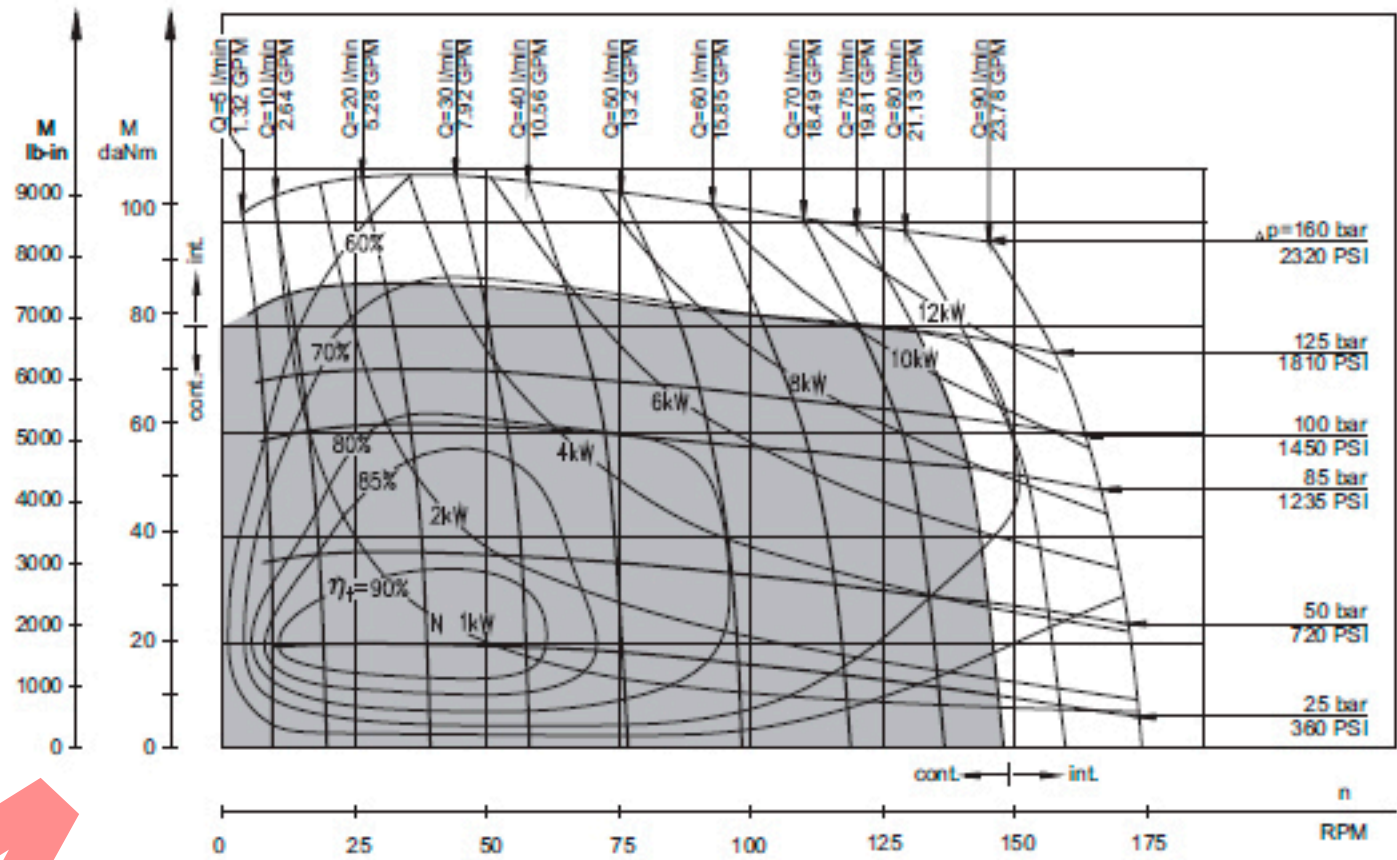


**SPECIFICATION DATA**

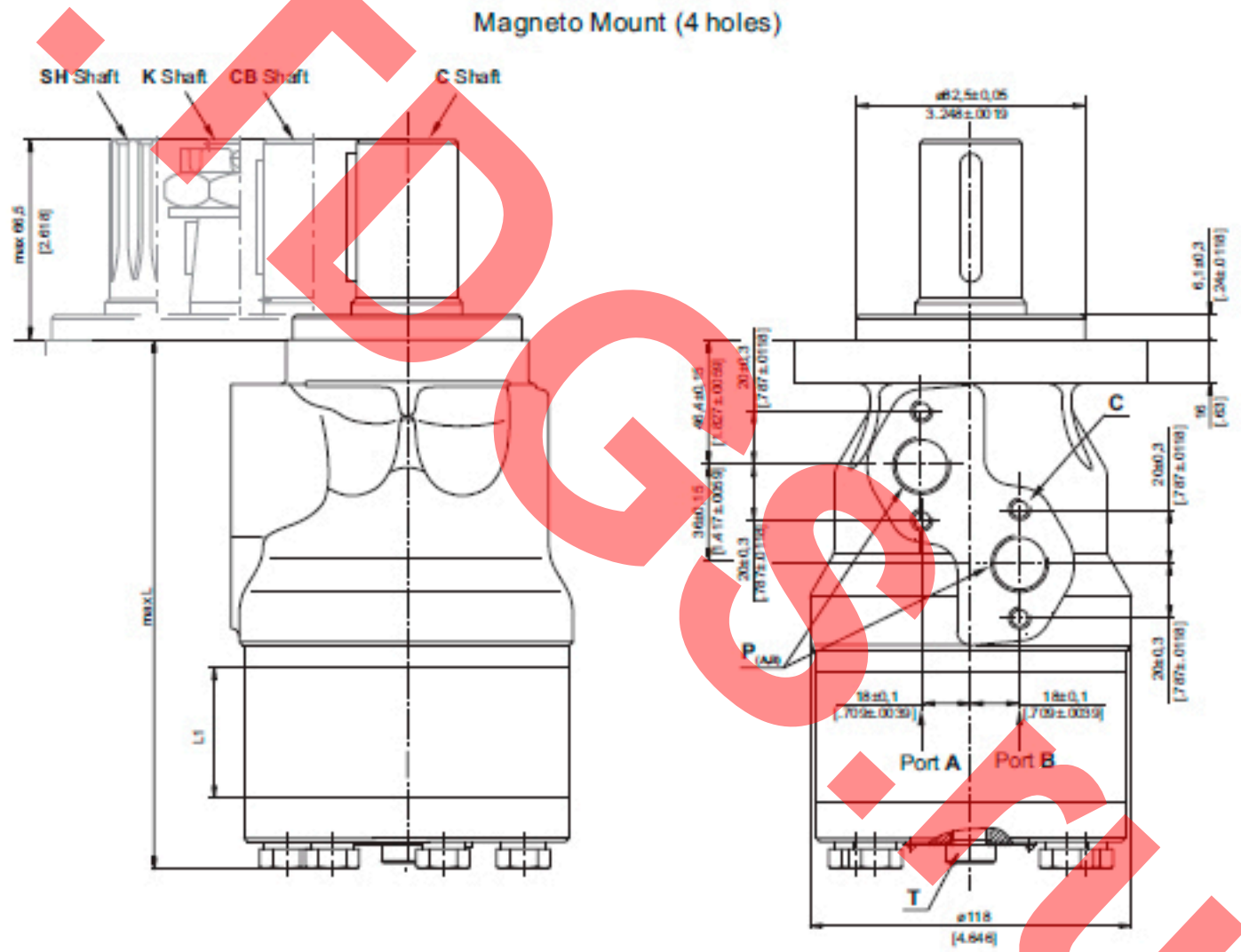
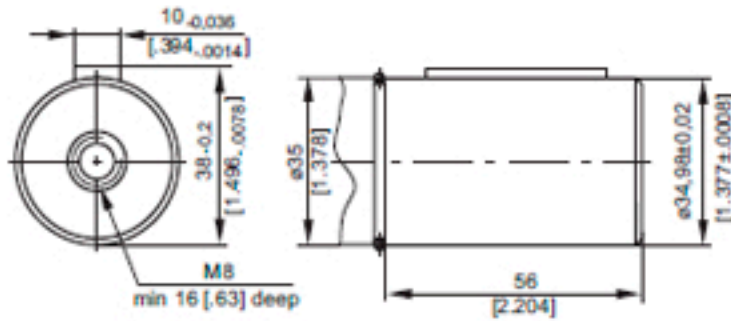
Type	MH 500
Displacement, cm <sup>3</sup> /rev [in <sup>3</sup> /rev]	502,4 [30.7]
Max. Speed, [RPM]	150
Max. Torque daNm [lb-in]	82 [7257]
Max. Output kW [HP]	11 [14.7]
Max. Pressure bar [PSI]	125 [1810]
Drop bar [PSI]	160 [2320]
Max. Oil Flow lpm [GPM]	75 [19.8 l]
Max. Inlet Pressure bar [PSI]	200 [2900]
Max. Starting Pressure with Unloaded Shaft, bar [PSI]	5 [72]
Min. Starting Torque, daNm [lb-in]	72 [6370]
Min. Speed***, [RPM]	5
Weight, kg [lb]	13 [28.7]

**MH 500**

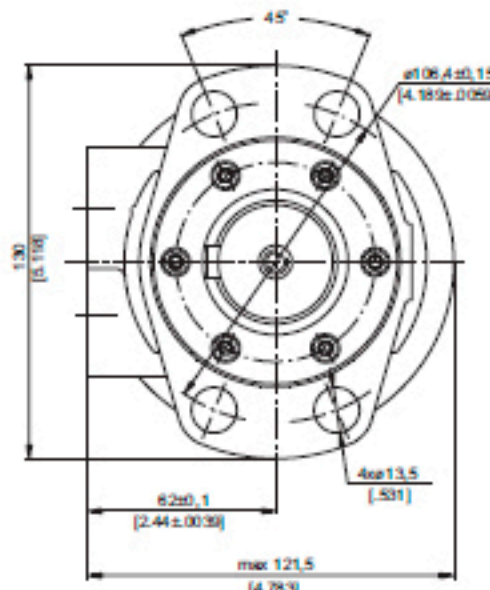


**DIMENSIONS AND MOUNTING DATA**

**CB** - ø35 straight, Parallel key A10x8x45 DIN 6885  
Max. Torque 95 daNm [8400 lb-in]



Type	L, mm [in.]	L <sub>1</sub> , mm [in.]
MH 500	211 [8.31]	69,4 [2.73]



- C : 4xM8-13 mm [.51 in] depth
- P<sub>(A,B)</sub> : 2xG 1/2 or 2xM22x1,5-15 mm [.59 in] depth
- T : G1/4 or M14x1,5-12 mm [.47 in] depth (plugged)

**Standard Rotation**  
Viewed from Shaft End  
Port A Pressurized - CW  
Port B Pressurized - CCW

**Reverse Rotation**  
Viewed from Shaft End  
Port A Pressurized - CCW  
Port B Pressurized - CW