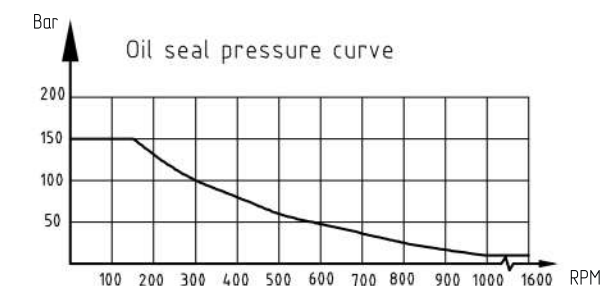
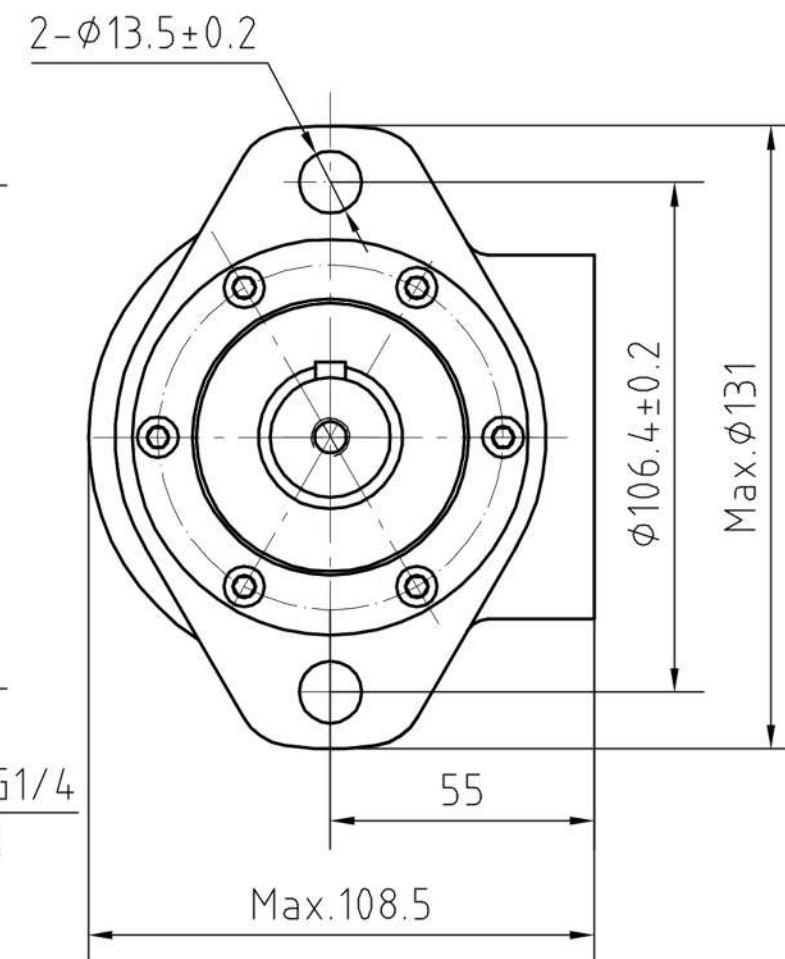
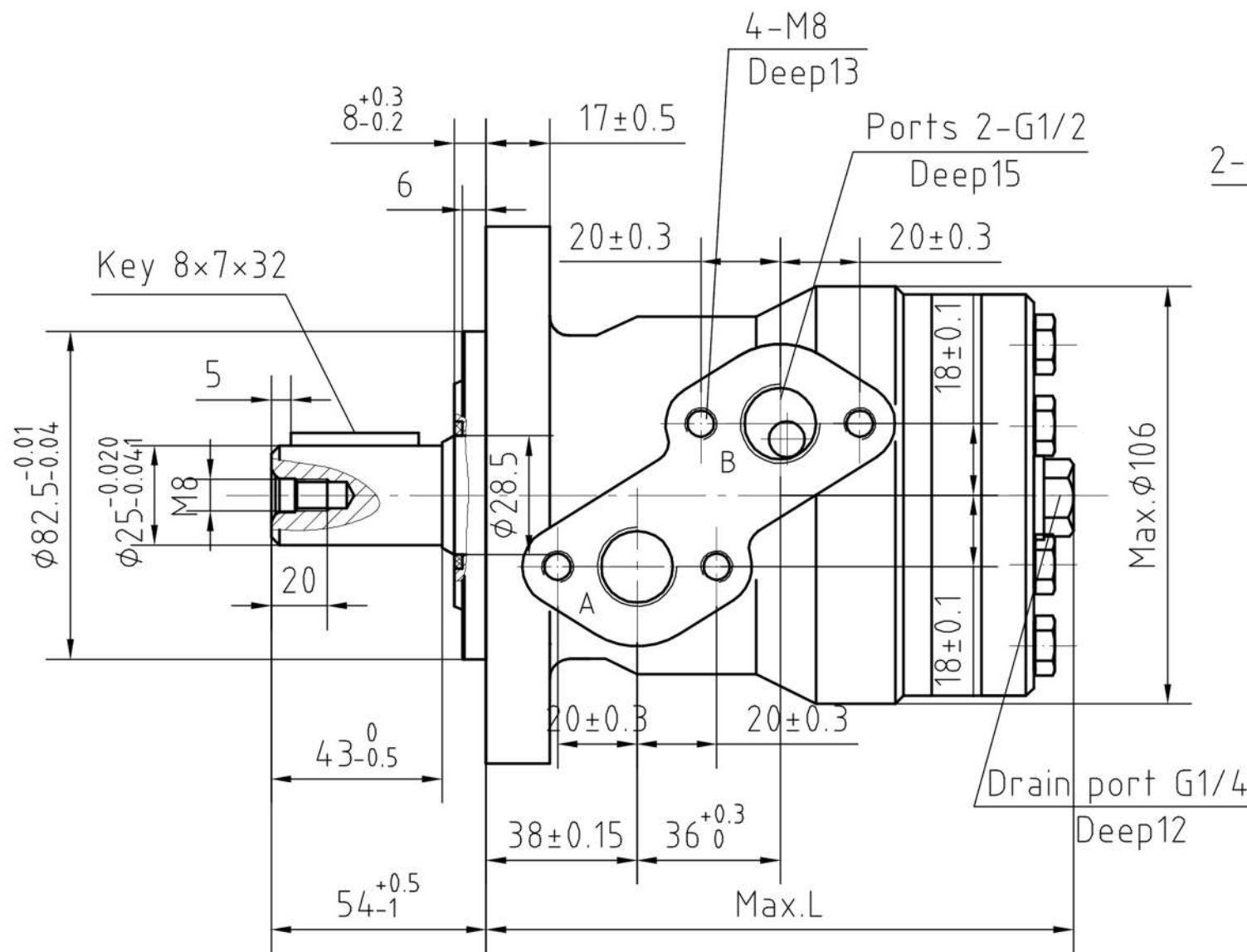
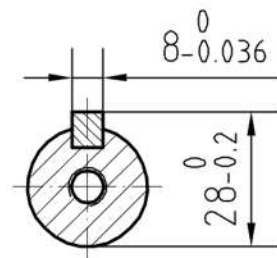
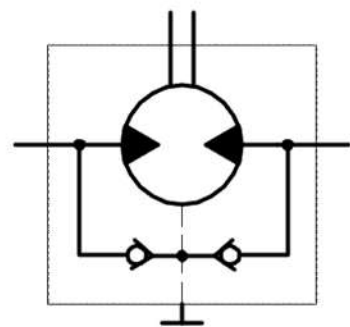


1. Painting RAL 9005-Black
2. High pressure shaft seal




The drain port could be closed as long as the pressure-rotation nominal specification is not exceed the above permissible curve.

Standard Rotation	Port A pressurized - clockwise
Viewed from Shaft End	Port B pressurized - counter-clockwise

Displacement-Dimensions									
Size	JMR-50	JMR-80	JMR-100	JMR-125	JMR-160	JMR-200	JMR-250	JMR-315	JMR-400
L, mm	143.0	148.0	151.5	156.0	162.0	169.0	178.0	190.0	204.0

E	Type	JMR 50	JMR 80	JMR 100	JMR 125	JMR 160	JMR 200	JMR 250	JMR 315	JMR 400	
	Geometric displacement	51,7	80,5	100,5	126,3	160,8	200,9	252,6	321,5	401,9	
	Max. speed (rpm)	cont.	770	745	595	475	370	295	235	185	150
	Max. torque (N*m)	cont.	93	152	194	237	310	369	380	380	380
		int.	118	189	236	296	378	450	470	470	470
	peak	135	216	270	338	433	509	540	540	540	
F	Max. output (kW)	cont.	7,0	10,0	10,0	10,0	10,0	8,0	6,0	5,0	4,0
	Max. pressure drop (MPa)	cont.	14,0	14,0	14,0	14,0	14,0	14,0	11,0	9,0	7,0
		int.	17,5	17,5	17,5	17,5	17,5	17,5	14,0	11,0	9,0
		peak	20,0	20,0	20,0	20,0	20,0	20,0	16,0	13,0	11,0
	Max. flow (L/min)	cont.	40	60	60	60	60	60	60	60	60
	Weight (kg)		6,5	6,9	7,0	7,3	7,5	8,0	8,5	9,0	11,0

		Jihostroj East s.r.o.		Tolleranze generali / General tolerances: UNI EN ISO 22768 - fh Proprietà del gruppo JSE. La riproduzione e la distribuzione non sono consentite. Tutti i diritti riservati. JSE Group's property. Reproduction and distribution are not permitted. All rights reserved.																																	
Vyracoval Author Milan Novak		Schválil Approved 25.01.2021		Ěislo palatovaru Make from Orbital Motor JMR																																	
Popis Description JMR-XXX-P1AIIY10-T10		Země původu Country of origin People's Republic of China		List C Sheet No 1/1																																	
Neoznačené hrany bez ořepů, max. zaoblení R0,2 (0,2x45°) Unmarked edges without burrs, max. radius R0,2 (0,2x45°) Všeobecná tolerance dle ČSN ISO 2768 Dimensions w/o tolerances acc. to: ČSN ISO 2768 Třída přesnosti ČSN ISO 2768-ck Accuracy class: ČSN ISO 2768-ck		Délkové rozměry podle Linear dimensions acc. to ČSN ISO 2768c: <table><tr><td>> 0,5</td><td>> 3</td><td>> 6</td><td>> 30</td><td>> 120</td><td>> 400</td><td>> 1000</td><td>> 2000</td></tr><tr><td>-</td><td>-</td><td>-</td><td>-</td><td>-</td><td>-</td><td>-</td><td>-</td></tr><tr><td>≤ 3</td><td>≤ 6</td><td>≤ 30</td><td>≤ 120</td><td>≤ 400</td><td>≤ 1000</td><td>≤ 2000</td><td>≤ 4000</td></tr></table> <table><tr><td>± 0,2</td><td>± 0,3</td><td>± 0,5</td><td>± 0,8</td><td>± 1,2</td><td>± 2</td><td>± 3</td><td>± 4</td></tr></table>		> 0,5	> 3	> 6	> 30	> 120	> 400	> 1000	> 2000	-	-	-	-	-	-	-	-	≤ 3	≤ 6	≤ 30	≤ 120	≤ 400	≤ 1000	≤ 2000	≤ 4000	± 0,2	± 0,3	± 0,5	± 0,8	± 1,2	± 2	± 3	± 4	Hmotnost Weight [kg] Měřítko Scale	
> 0,5	> 3	> 6	> 30	> 120	> 400	> 1000	> 2000																														
-	-	-	-	-	-	-	-																														
≤ 3	≤ 6	≤ 30	≤ 120	≤ 400	≤ 1000	≤ 2000	≤ 4000																														
± 0,2	± 0,3	± 0,5	± 0,8	± 1,2	± 2	± 3	± 4																														