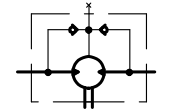


| Type | | JMSY80 | JMSY100 | JMSY125 | JMSY160 | JMSY200 | JMSY250 | JMSY315 |
|-----------------------------------|-------|--------|---------|---------|---------|---------|---------|---------|
| Geometric displacement (cm³/rev.) | | 80.6 | 100.8 | 125 | 154 | 194 | 243 | 311 |
| Max. speed (rpm) | cont. | 800 | 748 | 600 | 470 | 375 | 300 | 240 |
| | int. | 988 | 900 | 720 | 560 | 450 | 360 | 280 |
| Max. torque (N•m) | cont. | 225 | 290 | 365 | 485 | 586 | 708 | 880 |
| | int. | 305 | 390 | 480 | 590 | 705 | 860 | 1000 |
| Max. output (kW) | cont. | 16 | 18 | 18 | 18.1 | 18.1 | 18 | 17 |
| | int. | 20 | 22 | 23 | 25 | 24 | 23.8 | 20.2 |
| Max. pressure drop (MPa) | cont. | 20.5 | 20.5 | 20.5 | 21 | 21 | 20 | 20 |
| | int. | 27.5 | 27.5 | 27.5 | 26 | 25 | 25 | 24 |
| | peak | 29.5 | 29.5 | 29.5 | 28 | 27 | 27 | 26 |
| Max. flow (L/min) | cont. | 65 | 75 | 75 | 75 | 75 | 75 | 75 |
| | int. | 80 | 90 | 90 | 90 | 90 | 90 | 90 |
| Max. inlet pressure (MPa) | cont. | 25 | 25 | 25 | 25 | 25 | 25 | 25 |
| | int. | 30 | 30 | 30 | 30 | 30 | 30 | 30 |
| Weight (kg) | | 9.8 | 10 | 10.3 | 10.7 | 11.1 | 11.6 | 12.3 |

| Model | L | L1 | L2 |
|----------|-----|----|-------|
| JMSY-80 | 170 | 16 | 126,5 |
| JMSY-100 | 174 | 20 | 130,5 |
| JMSY-125 | 179 | 25 | 135,5 |
| JMSY-160 | 181 | 27 | 137,5 |
| JMSY-200 | 188 | 34 | 144,5 |
| JMSY-250 | 196 | 42 | 152,5 |
| JMSY-315 | 208 | 54 | 164,5 |



* Continuous pressure: Max. value of operating motor continuously.
 * Intermittent pressure: Max. value of operating motor in 6 seconds per minute.
 * Peak pressure: Max. value of operating motor in 0.6 second per minute.

Direction of rotation: Standard When facing shaft end of motor, shaft to rotate:
 Clockwise when port «A» is pressurized.
 Counterclockwise when port «B» is pressurized.
 Painted: Black.

| <table border="1"> <tr> <th>ID phase</th> <th>Weight</th> <th>Scale</th> </tr> <tr> <td>S A B</td> <td></td> <td></td> </tr> <tr> <td colspan="2">Total page</td> <td>Page</td> </tr> </table> | | | ID phase | Weight | Scale | S A B | | | Total page | | Page | Hydrodrive Ltd. Hydraulic motor JMSY-XXX | |
|--|--|------|----------|--------|-------|-------|--|--|------------|--|------|---|--|
| | | | ID phase | Weight | Scale | | | | | | | | |
| S A B | | | | | | | | | | | | | |
| Total page | | Page | | | | | | | | | | | |
| | | | | | | | | | | | | | |